

# Dust Extraction & Wood Waste



## Air Filters

Once the dust extractor is turned off, the cutting or sanding finished, off comes the mask and in most instances we think we have been very safety conscious. In fact, until a ray of sunlight passes through the workshop window we are unaware that a very high level of dust is still present in the air, probably just as much as when the machine or dust producer was in full swing. In order to further improve your workshop conditions, we offer a range of workshop air filters which may be left running quietly in the background, filtering out the very fine airborne dust particles. Using a two stage filter, the polyester pre-filter removes the larger particles whilst the multi-pocket bag filter filters out the very much finer particles. Suitable for ceiling mounting, wall mounting or just 'stand alone', these air filters will greatly improve the workshop environment. In order to specify the correct size filter or number of filters for a workshop, calculate the workshop volume and look to circulate the air some six times per hour.

**N.B. Air filters are to be used in conjunction with dust extraction and do not dispel the need for efficient machine extraction.**



Charcoal filter

Electrostatic pre-filter

### Jet AFS-500 Air Filtration System

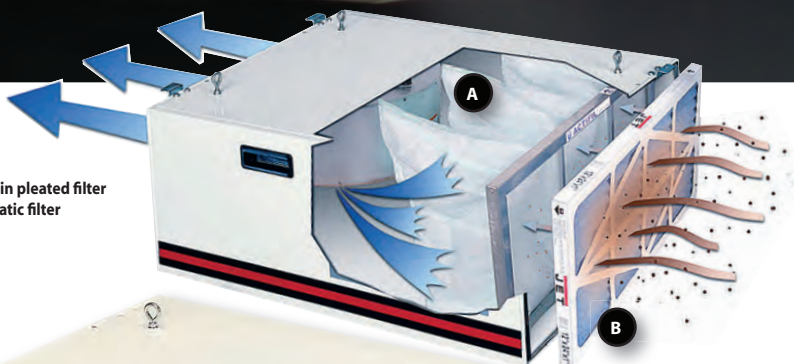
This is a medium to large workshop filter unit which has the advantage that it can be positioned anywhere in the workshop, either on a bench, a shelf or suspended from the ceiling. The unit is easy to operate and has three speeds simply activated by the push of a button or by using the convenient remote control. It should be mounted away from ventilation and heating vents and is only suitable for non-metallic dust particles. The unit can be positioned either vertically or horizontally to best utilise the space available. It is fitted with a pleated cloth main filter and an electrostatically charged pre-filter. An optional charcoal filter is available which can (a) neutralise odours and harmful organic fumes and (b) refresh the air by removing smoke, dust, bacteria, pollen and other harmful microscopic particles. **Supplied with main filter, electrostatically charged pre-filter and remote control.** For best results leave the AFS-500 running for a few minutes to clean the air after your machines have been switched off, or use the built in 2,4 or 8 hour timer options to run the filter after you leave the workshop.

	Inc.vat	Ex.vat	Code
Air Filter 230V	£224.94	£187.45	310483
AFS-500/1000B Electrostatic Filter	£14.94	£12.45	708731
AFS500 Main Filter	£29.94	£24.95	310484
AFS-500/1000B Charcoal Filter	£27.95	£23.29	708734





A Inner main pleated filter  
B Electrostatic filter



With a powerful Input 200W motor the AFS-1000 B is intended for the bigger more commercial workshop; it needs a secure mounting capable of holding a 40kg static load, at least 2 metres off the ground. The air passes through the electrostatic pre-filter into the main pleated filter, filtering 98% of all particles 5 microns in size and 85% of all particles 1 micron in size. The remote control unit has three settings for the motor speed and three different time settings of 2 hours, 4 hours and 8 hours, which can be used to clear the workshop after work has finished for the day. An optional charcoal filter is available, which will neutralise odours and harmful organic fumes or particles including pollen. A handy ceiling mounting kit consisting of 4 lengths of flexible stainless steel wire with screw eyes and bolt up crimps allows the machine to be positioned out of the way. Supplied with electrostatic pre-filter, main filter and 4 mounting eyes.

## Jet AFS-1000B Air Filtration System

	Inc.vat	Ex.vat	Code
AFS1000B Air Filter 230V	£294.95	£245.79	310481
AFS-500/1000B Electrostatic Filter	£14.94	£12.45	708731
AFS1000B Main Filter	£34.94	£29.12	400395
AFS-500/1000B Charcoal Filter	£27.95	£23.29	708734

### Comparison Chart - Air Filters

Model	AFS-500	AFS-1000 B
Rating	Trade	Trade
Power	Input 100W	Input 200W
Filtration	2 Stage	2 Stage
Air Movement	360, 480, 600m <sup>3</sup> /hr	720, 900, 1,200m <sup>3</sup> /hr
Room Volume	120m <sup>3</sup>	300m <sup>3</sup>
Particle Size	Inner-1 Micron, Outer-5 Microns	Inner-1 Micron, Outer-5 Microns
Overall L x W x H	400 x 610 x 300mm	768 x 610 x 305mm
Weight	15kg	25kg

## Accessories



### Air Filter Mounting Kit

Ceiling mounting kit for the JET air filtration units consisting of four lengths of flexible stainless steel wire with screw eyes and bolt-up crimps.

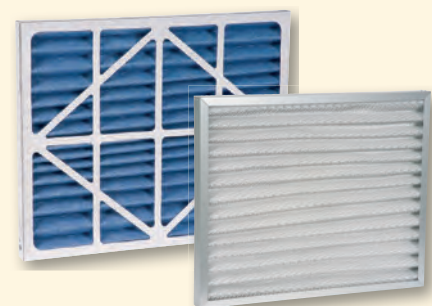
	Inc.vat	Ex.vat	Code
Mounting Kit	£34.96	£29.13	400398



### Perform CCAF Spare Filters

Original quality replacement filters for the Perform CCAF Air Filter. Both inner and outer filters available.

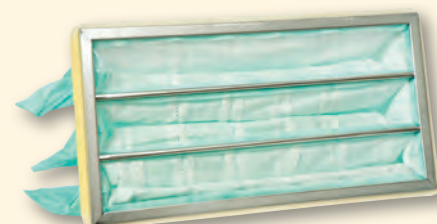
	Inc.vat	Ex.vat	Code
Replacement Outer Filter	£17.45	£14.54	100102
Replacement Inner Filter	£20.94	£17.45	100103



### Axminster AFS2000 Spare Filters

Original quality spare filters for the Axminster AFS2000 Air Filter. Outer and charcoal filters available.

	Inc.vat	Ex.vat	Code
Outer Filter	£19.94	£16.62	708722
Charcoal Filter	£42.95	£35.79	708721



### Axminster CT510(D), Jet AFS-1000B Main Filters

Spare original quality inner filters for the Axminster CT510, 510D and Jet AFS-1000B air filtration units.

	Inc.vat	Ex.vat	Code
AFS1000B/CT510D Main Filter	£34.94	£29.12	400395

# Chip Extraction

These extractors are powered by centrifugal fans which draw a large volume of air through the inlet hose and discharge it through the fabric filter bag situated on the top of the machine. The waste falls into the lower bag which can either be the fabric one supplied or the optional plastic waste sacks, where applicable. Although these machines generate a large volume of airflow the pressure rise is low which makes them unsuitable for operating with small diameter inlet hoses. A reduction below 3" diameter is not recommended. The mesh size of the filter bag has to be relatively coarse in order to allow the high volume of air to pass through and thus the extractor is not suitable for filtering out the very fine dust produced by sanding machines. The fine mesh filter bags or cartridge filters available for most of the models will improve the level of filtration but with some penalty in reduced airflow. Generally suitable for collecting chippings and larger particle size sawdust from machines equipped with 3" or 4" diameter outlets.

## Wood Waste Extraction

Not only does the introduction of an efficient dust or chip extraction system reduce this potential health hazard, but it keeps the workshop cleaner and generally makes working with wood in a confined space a much more enjoyable activity. The choice of the correct type of extractor for any particular application can be a bit confusing, with apparently conflicting requirements for collecting different types of waste from a wide variety of woodworking machinery. For more information regarding the potential risks of wood dusts, please visit:

<http://www.hse.gov.uk/woodworking/index.htm>  
and

<http://www.hse.gov.uk/coshh/industry/woodworking.htm>

As an aid to selecting a suitable extractor we have introduced the following performance rating guide to give a quick indication of the type of waste that each extractor is designed to handle. If you are still unsure of suitability please contact our Specialist Sales Dept on 03332 406406

Extraction Performance Ratings (guidance only)

- 1 - Chippings only
- 2 - Chippings and sawdust (with fine filter option fitted)
- 3 - Chippings, sawdust and sanding dust
- 4 - Chippings, sawdust, sanding dust and MDF dust

2



### Axminster Hobby Series AWDE5002 Extractor

This extractor can be used in small home workshops for common wood machining tasks where a higher airflow than provided by a vacuum extractor is required. A quiet running induction motor provides plenty of power to extract from many small workshop machines. The inlet diameter is 100mm(4"), the outlet into the bag is 125mm(5") and the airflow is sufficient to handle the majority of waste likely to be produced by the home workshop. A useful feature is that it can be used either in the horizontal position or suspended from a sturdy wall using the two hanging brackets provided. Hose not supplied. See extraction hose selection for further details. Please note that this is a chippings extractor and should not be expected to collect fine dust. As with all the high volume low pressure airflow machines, the inlet should not be restricted to below 75mm diameter and the bag should be emptied regularly. **Performance Rating 1**



	Inc.vat	Ex.vat	Code
AWDE5002 Dust Extractor 230V	£139.94	£116.62	501262
Quick Release 100mm Hose Clip	£5.45	£4.54	210323



### Axminster Hobby Series AWEDE2 Extractor

A chip and coarse dust extractor for extracting from saws, planers, spindle moulders, bandsaws and similar machines in a small workshop. Equipped with two cloth bags, the top one acting as the filter and the lower one for collecting the waste. Power comes from a 750W induction motor equipped with a no-volt-release switch and emergency stop button. If required, the cloth collection bag can be replaced with plastic waste sacks, which can be more convenient for storage of waste prior to disposal. An unusual feature of this extractor is the floor sweeping attachment which fits to the base of the machine, allowing the extractor to be wheeled around the workshop, collecting waste as it goes. There is a fine filter bag available for use when collecting medium sized dust particles, or alternatively, an optional fine dust cartridge filter can be fitted. **(N.B. You must use plastic waste sacks with the fine filter bag or cartridge filter).**

The machine is supplied with an approximately 600mm length of inlet hose; additional lengths of 100mm hose are available separately. **N.B. this machine uses waste sack size - 560 x 915mm (340068).**



	Inc.vat	Ex.vat	Code
AWEDE2 Dust Extractor 230V	£174.95	£145.79	501263
560 x 915mm Waste Sack Red (Pkt 10)	£10.44	£8.70	340068
Quick Fit Metal Strap to 1140mm(45")	£6.95	£5.79	800425
Fine Filter Bag	£9.44	£7.87	500079
Cartridge Filter	£119.94	£99.95	700344



### Axminster Hobby Series FM300BC Extractor

This extractor, with its 1.5kW motor, large capacity collection bag and twin 100mm hose inlets, will handle most single workshop machines. Use the single 125mm inlet or the twin 100mm adaptor for two smaller machines. The top cloth bag acts as the filter whilst the lower plastic bag collects the coarse dust and chippings. Plastic bags allow a number of bags to be filled and stored ready for bulk disposal. The extractor's filtration system can be upgraded with the addition of the cartridge filter. The solid connection tube between the impellor housing and collector creates an efficient air flow system. Castors on the base allow for easy mobility around the workshop. This is a good, solid, simple extractor. Lengths of suitable inlet hose are listed under Dust Extraction Accessories. **N.B. this machine uses waste sack size 785 x 1,200mm (501187).**



	Inc.vat	Ex.vat	Code
FM300BC Dust Extractor 230V	£249.95	£208.29	501264
785 x 1,200mm Waste Sack Yellow (Pkt 10)	£15.46	£12.88	501187
Quick Fit Metal Strap to 1450mm(57")	£6.95	£5.79	800426
Cartridge Filter for AWBDE	£144.95	£120.79	700345

#### Comparison Chart - Chip Extraction

Model	AWDE5002	AWEDE2	FM300B	FM300SA	UB-801F
Rating	Hobby	Hobby	Hobby	Hobby	Trade
Power	0.75kW (230V, 1ph)	750W (230V, 1ph)	1.5kW (230V, 1ph)	2.2kW (230V, 1ph)	0.75kW (230V, 1ph)
Air Flow	840m³/hr @ 100mm	850m³/hr	2,000m³/hr @ 100mm inlet 2,500m³/hr @ 125mm inlet	3,000m³/hr @ 150mm inlet	1,000m³/hr
Noise Level	70dB(A)	73dB(A)	77dB(A)	77dB(A)	65dB(A) @ 3m
Filtration	30 micron	30 micron	30 micron	30 micron	5 micron
Hose Diameter	100mm	100mm	1 x 125mm or 2 x 100mm	3 x 100mm, 1 x 150mm	100mm
Bag Capacity	37 litres	57 litres	150 litres	200 litres x 2	50 litres
Overall L x W x H	380 x 1,100 x 410mm	790 x 370 x 1,530mm	920 x 560 x 1,960mm	1,450 x 800 x 2,250mm	700 x 380 x 1750mm
Weight	22kg	24.5kg	47kg	58kg	30kg



## Optional Fine Filters



### AWEDE2 Filter Cartridge

Air filter cartridge for the AWEDE2 Extractor. Upgrades the performance of this extractor, able to handle fine saw dusts as well as chippings. Simply slots on with a stiff rubber seal. You must use plastic waste sacks with this filter. Partical size 1 micron.

	Inc.vat	Ex.vat	Code
Cartridge Filter	£119.94	£99.95	700344



### AWEDE/FM300BC/FM300SA Filter Cartridge

Air filter cartridge for the AWEDE, FM300BC and FM300SA chip extractors. Upgrade the performance of these extractors, able to handle fine saw dusts as well as chippings. Simply slots on with a stiff rubber seal. Partical size 1 micron. **N.B. 2 Filter Cartridges required for FM300SA**

	Inc.vat	Ex.vat	Code
Cartridge Filter for AWBDE	£144.95	£120.79	700345



### Axminster CK-370Z Filter Cartridge

An excellent addition to the UB-801F extractor to upgrade the performance. With a rating of 1 micron it is able to filter out fine dusts created when machining in the workshop. Easy to keep clean with a side mounted crank handle operating an internal paddle. With a large surface area there is little reduction in air flow, maintaining the performance of the extractor. Simple to fit with an included mounting flange that still allows the use of the standard 5 micron filter.

	Inc.vat	Ex.vat	Code
CK-370Z Filter Cartridge	£139.94	£116.62	951589



### Axminster Hobby Series FM300SA Extractor

The FM300SA is a twin bag chip and coarse dust extractor, suitable for many machines in the workshop. It can be connected to up to three smaller machines via its 3x 100mm connectors we recommend connecting it to a simple 125mm metal duct system. An alloy bodied motor drives a high efficiency impellor fan; the air flow into the bags is via metal tubes, again creating efficient air flow. The base has castors for easy mobility around the workshop. Plastic waste sacks are used, easy to replace and held with quick release metal straps. Large polyester air filters are fitted, these can be replaced with two cartridge filters which upgrade the filtration capability of the machine to be able to handle sanding machines. Fitted with a 13A plug, but in some cases will need a 16A supply.

**N.B. This machine uses 785 x 1,200mm waste sacks available in packs of 10 (501187).**



	Inc.vat	Ex.vat	Code
FM300SA Dust Extractor 230V	£329.94	£274.95	501265
785 x 1,200mm Waste Sack Yellow (Pkt 10)	£15.46	£12.88	501187



### Axminster Trade Series UB-801F Extractor

A thoroughly modern design of dust extractor with many individual features of note. The excellent performance comes from careful matching of the motor, impellor and housing, resulting in a quietly efficient machine able to extract chips and coarse dust from almost all small or medium sized machinery. An alloy impellor is fitted to reduce the risk of sparks and the standard filter is of 5 micron rating. A large capacity plastic waste sack and quick release straps are included. A clever feature is that you can divert the input air to a nozzle built into the base, enabling the machine to be used as a powered, mobile floor sweeper. Blast gates are fitted onto both inlet and floor sweep functions. A comfortable tubular handle and castor wheels are provided for easy mobility. The filtration performance can easily be upgraded by the addition of the CK-370Z filter cartridge, available as an optional extra. This is an excellent addition for those who wish to collect fine dust from saws or sanders. Easy to keep clean with the side-mounted crank handle, the extra surface area means that the overall air flow is not significantly reduced. Overall, a fine, modern extractor for any trade workshop, or a quality machine for your workshop at home. **Hose not supplied.**



	Inc.vat	Ex.vat	Code
UB-801F Chip Extractor 230V	£309.95	£258.29	501215
560 x 915mm Waste Sack Red (Pkt 10)	£10.44	£8.70	340068



Order online [axminster.co.uk/extraction](http://axminster.co.uk/extraction)



# Chip Extraction



## Axminster Trade Series UB-802 Extractor

This ruggedly built, highly efficient extractor is intended for daily workshop use. With an efficient impellor running in a carefully designed housing and powered by a 1.5kW motor, it produces more than enough airflow to run either two machines simultaneously or one large machine such as a big panel saw. A 5 micron filter bag is complemented by a large plastic waste sack, secured by quick fit metal straps. A clever feature is the bag hook system, making it easy for one person to fit/replace the waste sack. With the air inlet facing downwards and offering a choice of 1 x 150mm or 2 x 100mm inlets it is easy to connect to either a duct system or flexible hoses. Use for chips or coarse dusts, or, with the addition of the optional CK-500S filter cartridge upgrade the performance to extract fine dusts. Little air flow is lost due to the large surface area; a crank handle operated paddle keeps the filter clean. Fitted with castors and a grab handle, this unit is easily moved around the workshop. Supplied without hose.

**N.B. 16A supply required**

	Inc.vat	Ex.vat	Code
UB-802 Chip Extractor 230V	£559.94	£466.62	501216
785 x 940mm Waste Sack Orange (Pkt 10)	£12.44	£10.37	410241
CK-500S Cartridge Filter	£209.94	£174.95	951590

### Comparison Chart - Chip Extraction

Model	UB-802	UB-803
Rating	Trade	Trade
Power	1.5kW (230V, 1ph)	2.2kW (230V, 1ph)
Air Flow	2,000 m <sup>3</sup> /hr @ 150mm	3,000m <sup>3</sup> /hr @ 203mm
Noise Level	80dB(A) @ 3m	88dB(A) @ 3m
Particle Size	5 micron	5 micron
Hose Diameter	150 x 1, 100 x 2	1 x 203mm, 3 x 100mm
Bag Capacity	170 litres	330 litre
Overall L x W x H	960 x 490 x 1,840mm	1,580 x 490 x 1,850mm
Weight	70kg	86 kg



## Axminster Trade Series UB-803 Extractor

This is a large extractor for trade workshop use. Ideal for connection to a simple ducted system or for a large individual machine. A high efficiency impellor, running in a carefully designed housing, produces a large airflow. Robustly built and quiet running, this unit has twin 5 micron filters and large plastic waste sacks. The bag hook system makes fitting or replacing the waste sacks a quick and easy task. Both filters and bags are secured with quick fit metal straps. An adjustable diverter valve ensures that both waste sacks are filled evenly. Castors fitted to the base allow easy movement when required. Used as it is, this extractor is best suited for chips and large dusts.

However, you can upgrade the performance by fitting two of the optional CK-500S cartridge filters. These 1 micron units will handle fine dusts. They are easy to keep clean with a crank handle operated paddle. Little air flow is lost due to the large surface area. Supplied without hose, this extractor is a quiet and efficient machine.

**N.B. 16A supply required**

	Inc.vat	Ex.vat	Code
UB-803 Chip Extractor 230V	£699.95	£583.29	501217
785 x 940mm Waste Sack Orange (Pkt 10)	£12.44	£10.37	410241
CK-500S Cartridge Filter	£209.94	£174.95	951590



### Axminster CK-500S Filter Cartridge

An excellent addition to the UB-802 and UB-803 extractors to upgrade the performance. With a rating of 1 micron it is able to filter out fine dusts created when machining in the workshop. Easy to keep clean with a side mounted crank handle operating an internal paddle. With a large surface area there is little reduction in air flow, maintaining the performance of the extractor. Please note, two CK-500S cartridge filters are required for the UB-803 model.

	Inc.vat	Ex.vat	Code
CK-500S Cartridge Filter	£209.94	£174.95	951590





AXMINSTER  
Trade  
SERIES

NEW!



## Axminster Trade Series T-2000CK 1hp Cyclone Extractor

This is a small, highly portable cyclone extractor, aimed at the smaller workshop with many different types of machinery in use. Having a high efficiency separation system means that the air passing through the filter is 99% clean of waste, maintaining a high airflow for top performance. The filter has a 1 micron filtration performance and is fitted with a simple manual cleaning system. A manometer gauge gives an easy visual performance reference. Large waste bin 105 litres and is easy to remove and empty. Fitted with sturdy castors, this extractor is quite mobile so is easy to move from machine to machine. However, with a 150mm inlet it also lends itself to be fitted to a permanent ducting system. Able to run from a standard 13A plug, it is an attractive proposition for a small trade workshop or a keen amateur in a home workshop.



	Inc.vat	Ex.vat	Code
T-2000CK 1HP Cyclone Extractor	£749.95	£624.96	505087

### Comparison Chart - Cyclone Extraction

Model	T-2000CK	T-2000CK-HR
Rating	Trade	Trade
Power	0.75 kW (230V, 1ph)	1.5kW (230V, 1ph)
Air Flow	1,100m <sup>3</sup> /hr	2,300m <sup>3</sup> /hr
Noise Level	80 dB @ 3m	84dB @ 3m
Filter Area	3.8m <sup>2</sup>	7.4m <sup>2</sup>
Filtration	1 micron	1 micron
Particle Size	1 micron	1 micron
Hose Diameter	150mm x 1, 100mm x 2	200mm x 1, 100mm x 2
Overall L x W x H	1,300 x 1,100 x 1,560mm	1,250 x 1,000 x 1,800mm
Weight	71kg	83kg

AXMINSTER  
Trade  
SERIES

NEW!



## Axminster Trade Series T-2000CK 2hp Cyclone Extractor

This larger "Trade" rated extractor is also compact in size and is able to extract from larger, higher waste volume producing machines. Sharing the same high efficiency air flow system ensures high, consistent performance. Over 99% of waste is separated from the air stream before the air is passed through the 1 micron filter; a simple manual filter cleaning system keeps the filter clean. There is a manometer fitted to give a quick, visual indication of the filter performance. Waste container 155 litres is easily detached from the machine and has castors to allow easy mobility. The machine is fitted with wheels for mobility, but we would suggest the best way to get the benefit of this machine is to connect it to a permanent ducting system. The 200mm inlet would allow a multiple ported system to be used. Quiet and unobtrusive in use, this would be a good choice in many workshops.

**N.B. 2 Filter Cartridges required for FM300SA**



	Inc.vat	Ex.vat	Code
T-2000CK 2hp Cyclone Extractor	£1,099.96	£916.63	505088

AXMINSTER  
Trade  
SERIES

NEW!

### HEPA Filter for T-2000CK Cyclones

These optional HEPA cartridge filter's for the T-2000CK 1 and 2hp Cyclone Extractor's gives a 0.3 micron filtering performance. These filter's are best suited for use when these machine's are mainly being used for extracting from sanders or other fine dust producing machines. Some extra attention paid to keeping the filter clean will pay dividends for the performance of these filter's.

#### Specifications

	Inc.vat	Ex.vat	Code
HEPA Filter for T-2000CK 1hp Cyclone	£179.95	£149.96	505089
HEPA Filter for T-2000CK 2hp Cyclone	£259.96	£216.63	505090





## Jet DC-950A Extractor

Fitted with an industrial quality motor and specially designed impellor and housing for high extraction efficiency and quiet, vibration free running. Quick install collection bags means no straps are required. Four castors allow easy mobility. The 100mm inlet allows connections to most workshop machines, this extractor will easily cope with a 12" saw or 10 x 6" planer/thicknesser. Rugged design, withstands everyday use. Perfect for a small workshop, and offers a much better performance than lower cost machines. Supplied with a pack of five collection bags and a 30 micron filter bag. An optional Fine Filter Cartridge (700232) will filter out fine saw and sanding machine dusts.

**Supplied without a hose.**

**N.B. This machine uses waste sack size - 560 x 915mm (340068).**



	Inc.vat	Ex.vat	Code
DC9050-A Dust Extractor 230V	£286.94	£239.12	700231
560 x 915mm Waste Sack Red (Pkt 10)	£10.44	£8.70	340068



## Jet DC1900A Extractor

A high quality chip/coarse dust extractor, for connection to multiple machines or, ideally, to a ducted system. With an airflow of 2,400 m<sup>3</sup>/hr it will easily handle 2-3 small workshop machines or 1 large multiple outlet machine. Robustly built, quiet running and efficient in design this machine will suit the majority of requirements found in a typical small carpenter/joinery workshop. Fitted with a high efficiency steel fan and the unique "Vortex" cone design which maintains a high collection performance by preventing premature clogging of the filter. This works by separating the waste from the airflow, diverting the waste into the collecting bags. You can also upgrade the filtration performance by the addition of two Fine Filter Cartridge's which will have a very noticeable effect when the extractor is used on sanding machines. The filter's performance is maintained by the use of the internal paddle blade, operated by a handle on the top of the filter housing. Powered by a 2.2 kW 415V 3ph motor, this is a compact and very versatile extractor. Supplied with a pack of five collection bags and a 30 micron filter bag. **Supplied without a hose.** Please note this machine uses waste sack size - 785 x 940mm (410241).



	Inc.vat	Ex.vat	Code
DC1900A Extractor 415V	£699.95	£583.29	700389
785 x 940mm Waste Sack Orange (Pkt 10)	£12.44	£10.37	410241

### Comparison Chart - Chip Extraction

Model	DC-950A	DC-1100A	DC1900A
Rating	Trade	Trade	Trade
Power	750W (Max Input 1,250W) 230V 1ph	1.1kW (Max Input 1.9kW) 230V 1ph	2.2kW, (Max Input 4.25kW), 415V, 3ph
Air Flow	950m <sup>3</sup> /hr	1,620 m <sup>3</sup> /hr @ 150mm 1,100 m <sup>3</sup> /hr @ 100mm	2,900m <sup>3</sup> /hr @ 200mm
Noise Level	70dB(A)	80dB(A)	80dB(A)
Particle Size	30 micron	30 micron	30 micron
Hose Diameter	100mm	150mm, 2 x 100mm	3 x 100mm or 1 x 200mm
Bag Capacity	58 litres	200 litres	400 litres
Overall L x W x H	670 x 355 x 1,440mm	940 x 510 x 1,830mm	1,500 x 760 x 2,400mm
Weight	38kg	71kg	95kg





**VORTEX CONE™**  
PARTICLE SEPARATION SYSTEM  
PATENT PENDING



**Without the Vortex Cone**  
– filter gets clogged  
– reducing performance  
and requiring frequent  
maintenance.

**With the Vortex Cone**  
– filter stays cleaner  
– preserving performance  
and requiring little  
maintenance.



**Particle separation technology**  
that prevents up to 98% of  
particles from entering the upper  
bag or canister.

**Performance**

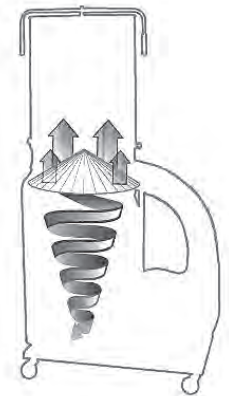
Only fine particles move to the filter chamber making manual cleaning easier and decreasing health concerns.

**Prevention**

Prevents the central airflow from floating chips into the filter chamber decreasing rapid performance drop due to premature clogging.

**Efficiency**

Chips are better contained for increased packing density requiring fewer collection bag changes.



## Jet DC1100A Extractor

This ruggedly made extractor is designed for extended workshop use. Offering industrial quality construction and exceptional wood chip and sawdust extraction, it is large enough for a 300mm planer or many other workshop machines. Fitted with a high efficiency steel fan and the unique "Vortex" cone design which maintains a high collection performance by preventing premature clogging of the filter. This works by separating the waste from the airflow, diverting the waste into the collecting bag. The base is fitted with castors for total mobility around the workshop. The 150mm inlet is fitted with a twin branch 100mm adaptor, allowing connection to either one or two machines. This machine is also available already upgraded to handle finer dusts with the addition of a 1 micron Fine Filter Cartridge (717141). This makes this already fine machine even more versatile. Supplied with a pack of five collection bags and a 30 micron filter bag. **Supplied without a hose.** Please note this machine uses waste sack size - 785 x 940mm (410241). **May require 16A supply**



	Inc.vat	Ex.vat	Code
DC1100A Dust Extractor 230V	£349.94	£291.62	210045
785 x 940mm Waste Sack Orange (Pkt 10)	£12.44	£10.37	410241
DC1100A Extractor and Filter Package - 230V	£584.95	£487.46	717141

## Optional Fine Filters

### Fine Filter Cartridge for Jet DC-950-A

Fine Filter Cartridge for the Jet DC-950A Extractor. Upgrades the machine to handle fine saw and sanding machine dusts. Simply clamps on with four hand knobs. Easily cleaned with a crank handle. Particle size 1 micron.

	Inc.vat	Ex.vat	Code
Micron Filter for DC-950-A	£269.94	£224.95	700232



### Fine Filter Cartridge for Jet DC1100A or DC1900A

Fine filter cartridge for DC1100 and DK1900A. 1 micron filtration, when fitted to either machine it upgrades the performance to be able to handle fine dusts from saws and sanding machines. Has 6 times the surface area of a standard filter bag. This ensures no loss of air flow and maintains performance. Note, two units are required for the DK1900A model.



	Inc.vat	Ex.vat	Code
Micron Filter	£264.95	£220.79	700390

# Industrial Extractors

**AXMINSTER**  
INDUSTRIAL SERIES

**3**  
AXMINSTER 3 YEAR  
THREE YEAR GUARANTEE



## Axminster Industrial Series UB-2200VECK Cyclone Extractor

This is a mobile cyclone dust extractor suitable for small to medium sized trade workshops. Able to handle most types of wood waste except for the very finest of dusts. With a 200mm inlet this is very suitable for a ducted workshop system, or if required, you could connect to two machines using the included 2 x 100mm adaptor. Nice and quiet in operation and features automatic filter cleaning for consistent airflow. A manometer gives a quick, visual indication of performance. The wheeled waste bin makes the task of waste disposal easier. This machine is a great all round extractor, able to cope with all but the largest machines. Supplied with 0.2 micron polyester cartridge filter, plastic collection bag and steel impeller.

**N.B. 16A supply required**

**Self Assembly**  
⚠️

**4**  
Performance rating

**Axminster Transport Delivery**  
See page 4

	Inc.vat	Ex.vat	Code
UB-2200VECK Cyclone Extractor 230V	£1,649.94	£1,374.95	210642
UB-2200 Drum Waste Sack	£3.44	£2.87	950116



## Axminster Industrial Series UB-3300VECK Cyclone Extractor

This is a mobile cyclone dust extractor suitable for the medium to large sized trade workshops. Able to handle most types of wood waste except for the very finest of dusts. With a 200mm inlet this is very suitable for a ducted workshop system, or if required, you could connect to three machines using the included 3 x 100mm adaptor. Nice and quiet in operation and features automatic filter cleaning for consistent airflow. A manometer gives a quick, visual indication of performance. The wheeled waste bin makes the task of waste disposal easier. This machine is a great all round extractor, able to cope with even large machines. Supplied with 1 micron polyester cartridge filter, plastic collection bag and steel impeller. < **N.B. 16A supply required.**

**Axminster Transport Delivery**  
See page 4

**Self Assembly**  
⚠️

**4**  
Performance rating

	Inc.vat	Ex.vat	Code
UB-3300VECK Cyclone Extractor 230V	£1,999.94	£1,666.62	210643
UB-3300 Waste Sack for Filter	£1.96	£1.63	950117
UB-3300 Drum Waste Sack	£4.96	£4.13	950118

## Accessories

### Waste Sacks for UB-2200 and UB-3300 Cyclone Extractors

Replacement waste sacks for the Axminster UB-2200 and UB-3300 Cyclone Extractors. Sold singly.

	Inc.vat	Ex.vat	Code
UB-2200 Drum Waste Sack	£3.44	£2.87	950116
UB-3300 Waste Sack for Filter	£1.96	£1.63	950117
UB-3300 Drum Waste Sack	£4.96	£4.13	950118

**3**  
AXMINSTER 3 YEAR  
THREE YEAR GUARANTEE



UB-503



UB-505



## Axminster Industrial Series UB-503 & UB-505 3hp Dust Extractor

These are a different style of dust extractor suited to specialist situations. In a cabinet style, they are quiet in operation, very mobile and completely self contained. Able to handle sanding dusts due to the multi piece filter system which has a manual shaker lever. A new design of impeller combines high efficiency with very low noise levels. Waste dusts are collected in a simple tray, easy to remove and empty. The inlet port can be located on either side or at the rear for convenience. A silencer can easily be added to the air outlet to reduce the noise even further. These extractors are not really suited to machines that produce large quantities of chips (a planer or thicknesser for example) but would be a great choice for school Design and Technology rooms, CNC routers, drum or pad sanders and other specialist machines.

**N.B. The UB-503 requires 16A supply and the UB-505 requires a 16A 3ph supply.**

**Axminster Transport Delivery**  
See page 4

**4**  
Performance rating

	Inc.vat	Ex.vat	Code
UB-503 Extractor 230V	£2,199.95	£1,833.29	501000
UB-505 Extractor 415V	£2,899.94	£2,416.62	501001

### Comparison Chart - Industrial Extractors

Model	UB-2200VECK	UB-3300VECK	UB-503	UB-505
Rating	Industrial	Industrial	Industrial	Industrial
Power	1.5kW (230V 1ph)	2.25kW (230V 1ph)	2.2kW (230V 1ph)	3.75kW (415V 3ph)
Air Flow	2,700m <sup>3</sup> /hr	3,700m <sup>3</sup> /hr	2,500m <sup>3</sup> /hr	3,100m <sup>3</sup> /hr
Noise Level	74dB(A) @ 3m	78dB(A) @ 3m	70db(A)	82dB(A)
Filter Area	3.7m <sup>2</sup>	6.5m <sup>2</sup>	16 bags, 115 x 650mm	16 bags, 115 x 900mm
Particle Size	1 micron	1 micron	2.0 micron	2 micron
Hose Diameter	100mm x 2 & 200mm x1	100mm x 3 & 200mm x1	100mm x 2 & 175mm x 1	100mm x 3 & 200mm x1
Overall L x W x H	1,000 x 670 x 1,700mm	1,200 x 670 x 2,200mm	820 x 760 x 1,750mm	850 x 750 x 2,000mm
Weight	131kg	179kg	197kg	230kg



AXMINSTER  
Hobby  
SERIES

AXMINSTER  
3  
YEAR WARRANTY



## Axminster Hobby Series RDC100H Vacuum Extractor

The RDC100H is a great, entry level workshop vacuum extractor, just right for the hobby woodworker working in a small home workshop. This machine will cope with waste shavings from most bench top machines and the smaller floor standing machines, especially bandsaws, circular saws, bench top surface planers and hand-held power tools (with the accessory power tool hose kit, 718910). The power head has a grab carrying handle and is fixed to the drum with a metal quick release strap. Fitted with a two stage filter comprising a cartridge filter and outer paper filter this will provide filtration of 1 micron. This machine is a great alternative to your household vacuum cleaner!

**3**  
Performance  
rating

	Inc.vat	Ex.vat	Code
RDC100H Vacuum Extractor 230V	£114.95	£95.79	501269
RDC100H Filter Cartridge	£6.95	£5.79	210092
RDC100H Filter Bags Pkt 5	£2.94	£2.45	210091



## Numatic 2.9m Hose, Stepped Red Reducer End Cap - PACKAGE DEAL



Package deal comprises the Numatic 2.9m Hose, Numatic Stepped Hose Reducer and the Numatic Reducer End Cap.

### Numatic 2.9m Hose

- 2.9m hose for use when extracting from power tools when fitted with the 610325 stepped adaptor
- Fits all Numatic/Axminster vacuum extractors fitted with a 51mm threaded cuff

### Numatic Stepped Hose Reducer

- Connects extraction hoses to a variety of power tools
- Can be trimmed to suit a range of outlet diameters

### Numatic Reducer End Cap

- Numatic reducer end cap 100mm - 51mm
- Allows the fitment of the 718085 pwr tool hose to a 100mm hose or extraction duct

This kit allows almost all small bench top machines or hand held power tools to be connected to the DC1100A Extractor. With a 2.9m hose and stepped rubber adaptor for easy connection.

	Inc.vat	Ex.vat	Code
Numatic 2.9m Hose, Stepped Reducer & Reducer End Cap - PACKAGE DEAL	£42.95	£35.79	718910



FINE Dust  
Extraction - For  
Power Tools etc.



AXMINSTER  
3  
YEAR WARRANTY

## Numatic NV750 Workshop Vacuum Extractor

This extractor is light in weight and easily stored under the workbench. The head assembly incorporates a 1,200W "Twinflo" vacuum motor and is fitted with a "Permatex" filter giving filtration down to 0.5 micron @ 99.99%, with the option of fitting a "HepaFlo" disposable filter bag if required. As standard, this machine meets the L Class filtration standards but can be upgraded to M Class filtration standards with the addition of the optional HEPA module (210658). The drum assembly incorporates a 51mm cyclonic inlet connector for large dust/chips, and a 51mm front entry for use with "HepaFlo" bags. The accessory kit included with the workshop utility vacuum includes a 2.5 metre x 51mm flexible extraction hose with a rubber expanding cuff for linking to most workshop machines up to 58mm dust ports. A 51mm stainless steel "gulper" crevice tool is provided for general workshop cleaning. A 2.9 metre x 32mm hose and step down adaptor for connecting to hand operated power tools or small, bench-top machines are low cost accessories. The accessories available enable this machine to be tailored to your own specific use, providing the best performing machine you could want for your workshop. This machine is the ideal solution for those requiring something portable and also to handle a large range of extraction tasks, robustly built in heavy gauge epoxy painted steel, has a 2 year warranty and best of all, it's designed and made in England!

	Inc.vat	Ex.vat	Code
NV750 Vacuum Extractor 230V	£254.95	£212.46	702413
Extraction Hose 2.9m & Adaptor	£29.95	£24.96	718085
2.9m 32mm hose	£19.94	£16.62	210551
HepaFlo Filter Bags NVM-4BH Pkt 10	£18.95	£15.79	211015
HEPA Module	£209.94	£174.95	210658
Floor Cleaning Kit	£79.94	£66.62	600071
Clip-on Mobility Chassis	£79.96	£66.63	210656



**4**  
Performance  
rating

Numatic  
2 year  
Warranty

### Comparison Chart - Vacuum Extractors

Model	RDC100H	NV750
Rating	Hobby	Trade
Power	1,100W	1,200W (230V)
Air Flow	180m <sup>3</sup> /hr	150m <sup>3</sup> /hr
Noise Level	85dB(A)	70dB
Particle Size	1 micron	0.5 micron @ 99.97%
Hose Diameter	100mm	51mm
Overall L x W x H	400 x 400 x 700mm	450mm diameter x 650mm height
Weight	10kg	11.2kg



# Vacuum Extractors



## Numatic NVD750 Workshop Vacuum Extractor

As standard, this machine meets the L Class filtration standards but can be upgraded to M Class filtration standards with the addition of the optional HEPA module (210657). When it comes to workshop applications coupled with unrivalled performance, the NVD 750 workshop vacuum extractor is in a class of its own. Many operational features are included within the package which will enable the user to link the extractor to a machine or hand operated power tool as required. The head assembly incorporates two 1,200W "TwinFlo" vacuum motors providing ample power for all but the most demanding of tasks. A visual flow indicator is also fitted for monitoring performance. The extractor is fitted with a red "Filtrex" primary filter and a secondary "Permatex" filter as standard, with the option of fitting a "HepaFlo" disposable filter bag if required, a must when machining MDF. The "Filtrex" filter also protects the filter system from impact damage from fast moving larger chips. There is an exhaust blower socket to enable the exhaust air to be ducted away from the workshop if required. The 10 meter cable set provides all round the workshop use from one power point. The drum assembly incorporates a 100mm cyclonic inlet connector, this is the best method of connection for most tasks. A 100-51mm reducer is provided to enable the 2.9m 32mm power tool hose to be fitted. The 51mm front entry is used when you need to use the Hepa Flo collection bags, perfect for the safe disposal fine or MDF dusts. The accessory kit provided with this extractor includes a 4 metre x 100mm diameter flexible extraction hose for linking to most small workshop machines, and a 2.9 metre 32mm hose and step down adaptor for connecting to hand operated power tools or small, bench top machines. The wide range of accessories available enable this machine to be tailored to your own specific use, including a mobility chassis and a floor cleaning kit. This machine is the best solution for those requiring something portable and also to handle a large range of extraction tasks. It is ruggedly made in epoxy painted steel, and is designed and made in England!



	Inc.vat	Ex.vat	Code
NVD750 Vacuum Extractor 230V	£369.95	£308.29	702412
Hepaflo Filter Bags NVM-4BH Pkt 10	£18.95	£15.79	211015
HEPA Module	£224.94	£187.45	210657
Floor Cleaning Kit	£79.94	£66.62	600071
Clip-on Mobility Chassis	£79.96	£66.63	210656



## Numatic WMD750 Mk2 Workshop Vacuum Extractor

The WMD 750 wall mounted vacuum extractor is intended for permanent siting on a load bearing wall (wall bracket included). The extractor incorporates many features including a visual flow indicator and easy disassembly for cleaning and maintenance. Included is a heavy duty woven waste sack, attached with a quick release strap, making waste disposal, quick, easy and clean. The head assembly incorporates two "TwinFlo" 1,200W vacuum motors providing ample power for all but the most demanding of tasks. The extractor is fitted with a "Filtrex" primary filter and a "Permatex" secondary filter as standard, giving L Class filtration of 0.5 micron @ 99.95%. The "Filtrex" filter acts as an impact absorber for the main filter as well as providing primary filtration. The drum assembly incorporates a 100-32mm cyclonic inlet connector, making this the perfect solution to many workshop applications. An extra layer of filtration can be provided by using an open HepaFlo bag supplied with the machine. Fitted to the front 51mm inlet, it is best used for power tool extraction. The accessory kit supplied with this machine includes a 4 metre 100mm extraction hose with soft rubber cuffs for linking to a ducted system or for direct connection to most machines. A 32mm hose and stepped rubber reducer for extracting from handheld power tools are part of the standard equipment supplied. This machine is ideal for those where workshop space is tight, or where sanders are a prime machine in use. The whole machine is very ruggedly constructed in epoxy painted steel and has a 2 year warranty. Another class leading British made product. **N.B. For those requiring an "M" Class machine, we now offer this option, 501300.**



	Inc.vat	Ex.vat	Code
WMD750 Mk2 Workshop Extractor 230V	£499.96	£416.63	501299
WMD750 Mk2 "M" Class Extractor 230V	£714.95	£595.79	501300



## Numatic NVD1500 Workshop Vacuum Extractor

Large capacity coupled with unrivalled performance make the NVD 1500 workshop vacuum extractor "the answer" for today's workshop requirements. The head assembly incorporates two 1,200W "TwinFlo" vacuum motors providing ample power for all but the most demanding of tasks. The extractor is fitted with a red "Filtrex" primary filter and a secondary "Permatex" filter as standard, offering L Class filtration down to 0.5 micron @ 99.95%, with the option of fitting a "HepaFlo" disposable filter bag if required, essential when machining MDF. The steel drum assembly has a maximum capacity of 50 litres, has 2 carrying grab handles, and incorporates a 100mm cyclonic inlet connector with a 51mm - 32mm reducer making this the perfect solution to most workshop applications. This size drum has been selected as the largest that can still be easily handled when full of waste material, anything larger would present possible problems when requiring emptying. The accessory kit included with the workshop vacuum extractor includes a 4 metre 100mm vacuum hose for linking to most workshop machines and a 2.9 metre 32mm hose and step down adaptor for connecting to a hand operated power tools or small benchtop machines. Many accessories are available to tailor this machine to your requirements, including a HEPA filter module for M Class filtration performance. This is a rugged and high performing machine, designed and built in England!



	Inc.vat	Ex.vat	Code
NVD1500 Vacuum Extractor 230V	£629.94	£524.95	702681
Floor Cleaning Kit	£79.94	£66.62	600071

### Comparison Chart - Vacuum Extractors

Model	NVD750	WMD750 Mk2	NVD1500
Rating	Trade	Trade	Trade
Power	2 x 1,200W (230V)	2 x 1,200W (230V, 1ph)	2 x 1,200W (230V)
Air Flow	300m <sup>3</sup> /hr	300m <sup>3</sup> /hr	300m <sup>3</sup> /hr
Noise Level	79dB	79dB	79dB
Filtration	0.5 micron @ 99.97%	0.5 micron @ 99.97%	0.5 micron @ 99.97%
Hose Diameter	100mm + 51mm	100mm + 32mm	100mm + 32mm
Bag Capacity	35 litres	70 litres	50 litres
Overall L x W x H	450mm diameter x 650mm height	500 x 400 x 1,110mm	-
Weight	12.8kg	26kg	23kg



AXMINSTER  
Hobby

AXMINSTER  
3  
THREE YEAR GUARANTEE



## Axminster Hobby Series DT-700U Downdraft Table

Very useful when hand sanding, the DT-700U. Of all steel construction, with a generous 903 x 473mm table size and protective rubber grommets, quite large items can be placed onto this downdraft table. Internal baffles ensure equal air movement over the entire table surface. A high volume extractor of 1000 m<sup>3</sup>/hr minimum is recommended rather than a vacuum type machine. Usefully, it can be stored on one end when not in use.

	Inc.vat	Ex.vat	Code
DT-700U Downdraft Table	£159.95	£133.29	501266



## Axminster Trade Series FT-1000/1600 Downdraft Tables

AXMINSTER  
3  
THREE YEAR GUARANTEE

Downdraft tables are an excellent method of capturing airborne dust created when hand sanding items of furniture. Because the air flow is downwards the dust is naturally drawn towards the table surface which has a series of hollow rubber grommets all it to protect other vulnerable surfaces. The FT-1000 has a 375W induction motor driving a large diameter impellor creating an air movement of 3,060 m<sup>3</sup>/hr. This air flow is drawn through the table surface and through a rear upstand inlet along the whole width of the table. The rubber grommets on the surface protect the work as well as providing an air gap under the work. Hinged side upstands can be laid down to allow longer workpieces to be mounted. There are two pleated filters to capture the dust in front of the impellor, ensuring clean air returns into the workshop,

whilst a dust tray in the bottom of the cabinet is easily drawn out for emptying. The FT-1600 model is simply a large table, twin motored model, with twin filters as well to allow a much higher airflow over the bigger table. Perfect for hand sanding or power sanding all types of timbers, but you should extract from power sanders at source. Easy to maintain with no tools being required. Solidly built, these machines provide a cleaner working environment and will be a boon in a trade workshop.

	Inc.vat	Ex.vat	Code
FT-1000 Downdraft Table 230V	£799.94	£666.62	501227
FT-1600 Downdraft Table 230V	£1,349.94	£1,124.95	501228
Filter for FT-1000/1600	£29.94	£24.95	950380

### Comparison Chart - Downdraft Tables

Model	DT-700U	FT-1000	FT-1600
Rating	Hobby	Trade	Trade
Power	-	375W (230V)	750W (230V)
Air Flow	-	3,060m <sup>3</sup> /hr	6,100m <sup>3</sup> /hr
Noise Level dB @ 1M	-	70dB(A)	74dB(A)
Overall L x W x H	970 x 540 x 250mm	1,060 x 670 x 860mm	1,600 x 650 x 900mm
Weight	11.5kg	110kg	198kg

## Accessories

### Clear Lightweight PVC Extraction Hose



Lightweight, double ply PVC wall, encapsulating a spring steel wire helix. Extremely flexible, can be used where tight curves are required. Blockages can be easily seen, enhancing the systems performance. Clockwise spiral.

	Inc.vat	Ex.vat	Code
Clear Hose 51mm x 1M	£10.44	£8.70	505001
Clear Hose 63mm x 1M	£13.94	£11.62	505002
Clear Hose 63mm x 2.5M	£28.94	£24.12	505003
Clear Hose 76mm x 1M	£15.95	£13.29	505004
Clear Hose 76mm x 2.5m	£31.94	£26.62	200774
Clear Hose 102mm x 1m	£17.94	£14.95	200776
Clear Hose 102mm x 2.5m	£43.94	£36.62	200777
Clear Hose 102mm x 5m	£74.94	£62.45	200778
Clear Hose 102mm x 10M	£139.94	£116.62	505005

### Clear Medium Weight PVC Extraction Hose



Medium weight, double ply clear PVC hose. Fully encapsulated PVC coated close pitch spring steel wire helix. Moderately flexible, it will accommodate quite tight curves, certainly anything associated with woodworking machinery. The inner wall is markedly smooth, aiding the flow of waste, also being clear any blockages are easily spotted. Temperature range 0°C to +70°C and able to withstand quite abrasive materials. Clockwise spiral.

	Inc.vat	Ex.vat	Code
Clear Reinforced PVC Hose 102mm x 1m	£19.94	£16.62	505006
Clear Reinforced PVC Hose 102mm x 2.5m	£44.94	£37.45	505007
Clear Reinforced PVC Hose 102mm x 5m	£86.94	£72.45	505008
Clear Reinforced PVC Hose 102mm x 10m	£159.95	£133.29	505009
Clear Reinforced PVC Hose 127mm x 1m	£24.95	£20.79	505010
Clear Reinforced PVC Hose 127mm x 2.5m	£59.94	£49.95	505011
Clear Reinforced PVC Hose 152mm x 2.5m	£65.94	£54.95	505012

### Clear Heavy Duty PU Extraction Hose



- Polyester-polyurethane wall, embedded PVC coated spring steel wire helix
- Moderately flexible with a very smooth inside surface
- Extremely abrasion resistant and almost penetration proof
- Smooth bore means that the likelihood of blockages occurring are remote
- Temperature range of -40°C to +100°C
- Perfect for high volume waste producing machines

	Inc.vat	Ex.vat	Code
Clear Reinforced PU Hose 102mm x 1m	£24.95	£20.79	505013
Clear Reinforced PU Hose 102mm x 2.5m	£59.94	£49.95	505014
Clear Reinforced PU Hose 102mm x 5m	£114.95	£95.79	505015
Clear Reinforced PU Hose 127mm x 1m	£30.95	£25.79	505016
Clear Reinforced PU Hose 127mm x 2.5m	£72.95	£60.79	505017
Clear Reinforced PU Hose 152mm x 1m	£34.94	£29.12	505018
Clear Reinforced PU Hose 152mm x 2.5m	£83.94	£69.95	505019

### Stayput Extraction Hose



- Semi-rigid hose
- Stays put when bent into shape
- Diameter changes over a range of ±20mm when twisted
- A short length suitably adjusted for diameter can be used to adapt between hoses and machine outlets of different sizes
- Available in grey with a diameter of 102mm(4") and increments of one metre with the hose extended

	Inc.vat	Ex.vat	Code
Hose 100mm x 1m	£32.95	£27.46	200797
90 to 110mm Clip (each)	£1.55	£1.29	500480

For more extraction hoses & accessories visit [axminster.co.uk/extractionhose](http://axminster.co.uk/extractionhose)



# Extraction Accessories

## Accessories

### Numatic Flexible Extraction Hose Kit

- Lengths of high quality wire reinforced 100mm hose
- Rubber end cuffs to suit extraction outlets 100-110mm
- Ideal for mobile workshop chip and dust extractors



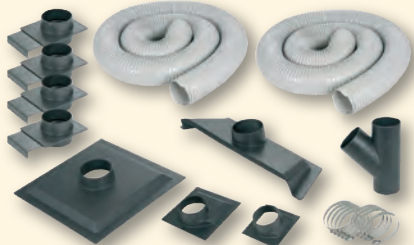
	Inc.vat	Ex.vat	Code
Numatic 4m x 100mm Extraction Hose Kit	£69.95	£58.29	211597
Numatic 2m x 100mm Extraction Hose Kit	£39.95	£33.29	501082

### Hose Hook

- Keep hoses, ropes and extension leads stowed away and tidy
- 100mm diameter curve
- Use to support dust extractor hose
- Supplied with three wall plugs and screws



	Inc.vat	Ex.vat	Code
Hose Hook	£1.94	£1.62	600684



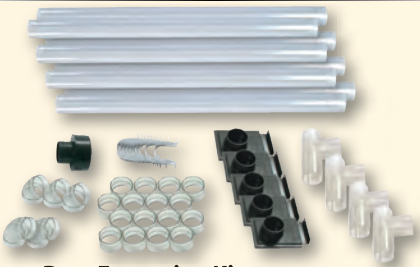
### 100mm Dust Extraction Accessory Kit

This is a useful kit of components that the average woodworker could well find useful when connecting up his machines to the extraction system. The contents of the kit are:

- |   |   |
|---|---|
| 2 x 3m lengths of 100mm diameter flexible hose. | 10 x 100mm pipe clamps.                           |
| 1 x table saw dust hood.                        | 4 x 100mm blast gates.                            |
| 1 x 100mm Y fitting.                            | 1 x floor sweeper and 1 x 150mm jointer dust hood |

Something in here for everyone!

	Inc.vat	Ex.vat	Code
100mm Extraction Kit	£99.95	£83.29	410064



### 63mm Dust Extraction Kit

- Especially for the smaller workshop
- Ducting package complete with elbows, blast gates and adaptors
- 8 three foot lengths of tube (63mm diameter)
- 4 x tee joints
- 3 x 45° joiners
- 2 x 90° elbows
- 16 x pipe joiners
- 5 x plastic blast gates
- 10 x wall clips
- 100mm to 63mm adaptor
- Additional parts available separately

	Inc.vat	Ex.vat	Code
Dust Extraction Kit 63mm	£94.94	£79.12	410063
915mm Lengths of 63mm Pipe (4 Pack)	£29.94	£24.95	410069
90° Elbow for 63mm DEK	£4.44	£3.70	410066
Pipe Joiner for 63mm DEK	£1.85	£1.54	410070
45° Elbow for 63mm DEK	£2.15	£1.79	410065
Tee Joiner for 63mm DEK	£4.44	£3.70	410072
Blast Gate for 63mm DEK	£3.95	£3.29	410067
Securing Clips 63mm (10)	£6.44	£5.37	410068
100mm to 63mm Reducer	£2.64	£2.20	410071



### 100mm Dust Extraction kit

A 100mm ducting kit with most items a home woodworker needs to connect machines to an extractor. Comprising 8 X 910mm lengths of 100mm clear plastic duct, 2 X T junctions, 2 X 90 degree elbows, 2 X 45 degree elbows, 3 x blastgates and 16 x joiners. A pack of 10 wall brackets with screws and wallplugs are included. All the items are available separately, enabling you to build a system exactly how you need it. Our other accessories such as the 990053 Y junction, 500181 Flanged Spigot and 200114 Big Mouth Dust Hood all fit this kit. Add a 410064 kit and you will get 2 x 3m lengths of flexible hose as well as a whole host of useful connectors and hoods. The 510412 Earth Grounding Kit would be worth considering to protect yourself from possible static build up. Seriously good value for money, this kit is exactly what the home workshop requires.



	Inc.vat	Ex.vat	Code
Dust Extraction kit	£169.94	£141.62	210695
100mm x 910mm clear pipe	£14.94	£12.45	210697
Joining Splice	£2.75	£2.29	210698
45° Elbow	£3.54	£2.95	210699
Wall Clip	£00.95	£00.79	210700

### Numatic 63mm Dust Extraction Kit Attachment

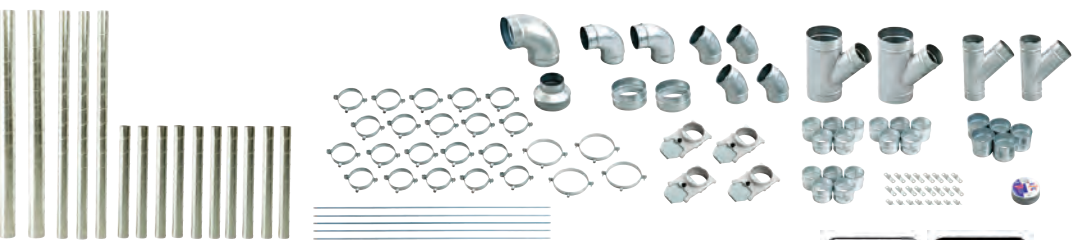


**NEW!**

The Numatic vacuum attachment kit has been designed for use with the Axminster 63mm Dust Extraction Kit. It allows any Numatic vacuum machine from a "Henry" upwards to be used to provide the vacuum to this 63mm system. It simply fits into a DEK "T" junction and provides a threaded connector for the 2.5m double threaded Numatic hose which is part of the kit. This hose has the 51mm female thread allowing it to be fitted to any standard Numatic vacuum machine. For the purpose that the Axminster DEK is intended, even a Henry would provide adequate air flow and, when used with HepaFlo bags, top grade filtration as well. Simple to fit and very effective.



	Inc.vat	Ex.vat	Code
63mm Dust Extraction Kit Attachment	£54.95	£45.79	501270



### Workshop Metal Ducting Kit

**NEW!**

A package of dust and chip extraction metal ducting, enough to extract from four machines, consisting of:

- |                                |                                       |
|--------------------------------|---------------------------------------|
| 2 x 2m 150mm Duct              | 1 x 100mm Fixture Joiners (pack of 5) |
| 1 x 150mm 90° Elbow            | 20 x 100mm Suspension Ring Fixings    |
| 2 x 150-100mm 45° Branch Tee   | 4 x 150mm Suspension Ring Fixings     |
| 1 x 150-100mm Reducer          | 4 x 100mm Blast Gates                 |
| 3 x 2m 100mm Duct              | 5 x 1m x 8mm Threaded Rod             |
| 10 x 1m 100mm Duct             | 24 x 8mm Threaded Back Plates         |
| 2 x 150mm Joiners              | 1 x Duct Tape                         |
| 3 x 100mm Joiners (packs of 5) |                                       |
| 2 x 90° 100mm Elbow            |                                       |
| 4 x 45° 100mm Elbow            |                                       |
| 2 x 100-100mm 45° Branch Tee   |                                       |

Extra or additional components are available from our Metal Ducting selection, but this kit would be enough for many small workshops and take the guesswork out of what you may require. Ducting lengths may be shortened with a metal cutting hack saw. Keep the design simple and follow these rules:

- Don't over complicate the system
- Keep transfer duct as large as the extractor will accept
- Keep flexible duct to a minimum length or none at all if possible
- Keep branches joining a duct to 45° maximum
- Fit blast gates to maximise efficiency and balance to the system

	Inc.vat	Ex.vat	Code
Metal Ducting Kit	£669.95	£558.29	717045





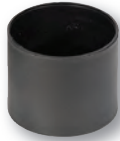
## 100mm x 910mm Clear Pipe for 100mm Dust Extraction kit

An extra length of 100mm x 910mm clear tube for use with the 100mm wall mounted kit to extend it if required.

	Inc.vat	Ex.vat	Code
100mm x 910mm clear pipe	£14.94	£12.45	210697

## 100mm x 100mm Joining Splice for 100mm Dust Extraction kit

An extra 100mm x 100mm joining splice for use with the 100mm wall mounted ducting kit to extend it if required.



	Inc.vat	Ex.vat	Code
Joining Splice	£2.75	£2.29	210698

## 100mm Wall Clip for 100mm Dust Extraction Kit

An extra 100mm wall clip for use with the 100mm wall mounted ducting kit to extend it if required.



	Inc.vat	Ex.vat	Code
Wall Clip	£00.95	£00.79	210700

## 100mm x 45 Degree Elbow for 100mm Dust Extraction kit

An extra 100mm 45 degree elbow for use with the 100mm wall mounted ducting kit to extend it if required.



	Inc.vat	Ex.vat	Code
45° Elbow	£3.54	£2.95	210699

## Elbows

This elbow gives a gently rounded curved bend which produces less resistance to the air as well as minimising the risk of blockage.



	Inc.vat	Ex.vat	Code
90° ABS Elbow for 100mm Hose	£4.85	£4.04	410258

## T Junctions

This T Junction hose ducting accessory is manufactured from high quality ABS plastic and is strong with a smooth internal bore. The outside diameter of the fitting allow for a snug fit into the appropriate size of flexible hose and secured using fixing clips.



	Inc.vat	Ex.vat	Code
ABS T Junction for 100mm Hose	£5.75	£4.79	900337

## Y Junctions

This Y Junction hose ducting accessory is strong with a smooth internal bore. The outside diameters of the fitting allow for a snug fit into the appropriate size of flexible hose and secured using fixing clips.



	Inc.vat	Ex.vat	Code
ABS Y Junction for 75mm Hose	£3.95	£3.29	990052
ABS Y Junction for 100mm Hose	£5.64	£4.70	990053



## Quick Release 100mm Hose Fixing Clip

These handy hose clips allows the quick changing of a 100mm dust extraction hose from one machine to another. Acting as a large spring and operated by one hand it could not be easier. Ideal for the hobby woodworker in a small workshop, now there is no excuse for not using your extractor. Supplied in pairs.

	Inc.vat	Ex.vat	Code
Quick Release 100mm Hose Clip (Pair)	£5.45	£4.54	210323



## Dust Extraction System Grounding Kit

### WARNING

Dust and debris moving inside the plastic extraction hose may cause a build up of static electricity. This can cause a potential hazard especially with fine dust. Dust extraction systems are a great deal safer if properly grounded. This kit contains 12metres of copper wire and all the necessary adaptors to ground a system.

	Inc.vat	Ex.vat	Code
Dust Extraction Grounding Kit	£17.95	£14.96	510412

## Hose Fixing Clips



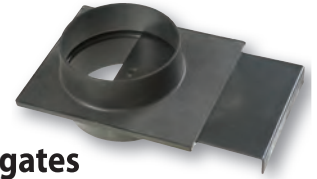
Used for securing hose ends and also for many other applications. Second to none on exhaust repairs! 510405 is a flexible driver with a hexagon socket at the end - the quick and safe way to tighten up your clips, available separately.

	Inc.vat	Ex.vat	Code
51 to 70mm Clip (Pkt 3)	£3.05	£2.54	510401
70 to 90mm Clip	£1.25	£1.04	410477
95 to 115mm Clip	£1.55	£1.29	410486
110 to 140mm Clip	£1.74	£1.45	410487
135 to 165mm Clip	£1.94	£1.62	410488
185 to 210mm Clip	£2.15	£1.79	951617
Flexible Clip Driver	£13.44	£11.20	510405

## Quick Fit Hose Fixing Clips

A simple steel fixing clip with plastic butterfly handle for speed and ease of use and ideal for most 100mm hose applications. Especially useful when blockages occur; they can be rectified immediately without the need for screwdriver or clipdriver.

	Inc.vat	Ex.vat	Code
90 to 110mm Clip (each)	£1.55	£1.29	500480
90 to 110mm Clip (Pkt 5)	£6.95	£5.79	500481
50 - 70mm Clip	£1.44	£1.20	211998
70 - 90mm Clip	£1.44	£1.20	211999
110 - 130mm Clip	£1.55	£1.29	950501



## Plastic Blastgates

An important accessory in the installation of any dust extraction system. Blastgates are fitted into the ducts between the machines and the dust extractor and can be opened or closed to control the flow to the various machines. 100mm diameter.

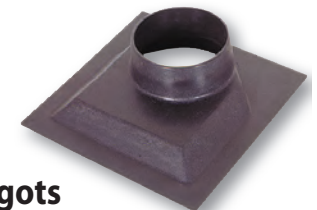
	Inc.vat	Ex.vat	Code
Plastic Blastgate for 100mm Hose	£3.05	£2.54	340921



## Aluminium Blastgates

Aluminium blastgates, stronger than plastic and with a locking screw.

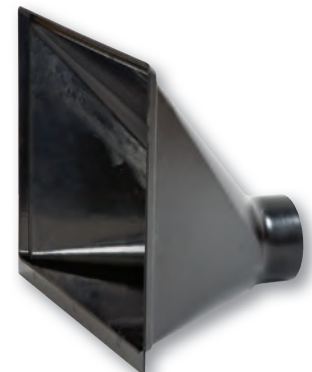
	Inc.vat	Ex.vat	Code
Blastgate for 100mm Hose	£7.94	£6.62	340920
Blastgate for 125mm Hose	£9.95	£8.29	200071
Blastgate for 150mm Hose	£11.45	£9.54	200070



## Flanged Spigots

This adaptor has a whole range of uses including making the hose connections on home-made dust extractor hoods and bowls from thin section plywood. 100mm adaptor made from ABS plastic and measures 205mm square.

	Inc.vat	Ex.vat	Code
ABS Flanged Spigot for 100mm Hose	£2.24	£1.87	500181



## Big Mouth Dust Hood

A large rectangular funnel, 410 x 325mm and 270mm deep ending in a circular spigot to fit 100mm diameter hose. The Big Mouth Dust Hood will fit directly onto the Axminster Heavy Duty Variable Height Dust Extraction Hood (410073), providing a larger catchment area, or it can be used alone behind a radial arm saw or other machine with no specific extraction port.

	Inc.vat	Ex.vat	Code
Dust Hood	£10.74	£8.95	200114



## Floor Sweep

You can either use your extractor in the manner of a vacuum cleaner, or use a soft brush to sweep the debris into the mouth of this ABS fitting. Fits onto a 100mm hose.

	Inc.vat	Ex.vat	Code
ABS Floor Sweep for 100mm Hose	£6.44	£5.37	510411

## Universal Dust Port Bracket

This is a very useful device enabling the secure positioning of a 100mm extraction hose or dust port in many different ways. The saddle and hose clip have a very strong magnetic mount which can be used alone to attach to a ferrous metal surface whilst the supplied clamp can be used to position the bracket either vertically or horizontally. Especially useful for woodturning or bench work.



Inc.vat Ex.vat Code

Dust Port Bracket	£14.94	£12.45	210299
-------------------	--------	--------	--------

## Axminster Bendi-Hoze

Bendi-Hoze is an articulated tube 75 mm diameter by 610mm long. It is designed to attach to an extractor and can be adjusted so that the inlet is in the best position to extract from a lathe, bench sander, soldering station, power tool etc. The kit includes a 75mm hose adaptor and three extraction nozzles. The first nozzle is a 115 x 90mm funnel, the second a 115mm round funnel and the third a narrow vacuum nozzle. An additional 600mm extension hose is available either as an extension or to use a number of the hose ends at the same time.



Inc.vat Ex.vat Code

Bendi-Hoze Kit	£32.45	£27.04	056001
Extension 600mm	£22.94	£19.12	056003



## Floor Gulper Attachment

Gulp up all your shavings and dust with this handy attachment. Simply connect it to a length of 100mm flexible hose linked into your workshop extractor and clean up! With a convenient handle and castor wheels you will whizz round your workshop in no time. Supplied complete with a blastgate, you can leave this rigged up permanently. Requires an extractor size of 1,000m<sup>3</sup>/hr as a minimum to work effectively, so many small, portable extractors are quite suitable.

Inc.vat Ex.vat Code

Floor Gulper Attachment	£37.94	£31.62	211551
-------------------------	--------	--------	--------



## Saw Table Dust Extraction Guard

The Table Saw Extraction Guard provides a two-part solution to the problem of handling large sheets on a saw bench. Firstly, it supports the extraction hose clear of the table to allow wide sheets to pass through uninterrupted and secondly, its 100mm diameter hose can be connected directly to the extractor to give a greater airflow and hence more effective extraction. The guard is intended for use with saws equipped with a right hand extension table and will extend up to 2 metres, giving clearance for even the widest of sheet material. The guard is supported on a tubular steel pillar which stands on the floor alongside the extension table and secured to it with a bracket and bracing rods. The method of fitting the bracket to the saw table depends on the material and construction of the table and there may be some simple fitting work necessary.

**If you are still unsure of suitability please contact our Specialist Sales Dept.**

Inc.vat Ex.vat Code

Extraction Hood	£159.95	£133.29	056002
-----------------	---------	---------	--------

## Light Duty Variable Height Extraction Hood

A simple dust extraction hood mounted on an adjustable height stand. Very useful for situations where direct connection to a machine is not possible, such as woodturning. Having a robust ABS hood fastened to a 100mm diameter metal tube, this is easily connected to flexible extraction hose leading from your extraction system. The steel stand gives a useful height range from 750-1,200mm and has 3 feet, so no wobbles on your uneven workshop floor! The hood has an inlet of 320 x 35mm creating a good airflow, an extractor of at least 750m<sup>3</sup>/hour is recommended. Will not accept Big mouth dust hood (200114)



Inc.vat Ex.vat Code

Variable Height Extraction Stand	£26.94	£22.45	950030
----------------------------------	--------	--------	--------



## Heavy Duty Variable Height Extraction Hood

For extracting waste from a lathe or other dust source where direct connection to the machine is not possible or convenient. Adjustable in height from 710mm to 1220mm with tilting facility to enable the collection slot to be positioned at the best possible angle. The hood is made from cast alloy and the collection slot measures 300 x 50mm. It is easily connected to 100mm flexible hose leading to an extractor of around 1,000m<sup>3</sup>/hr. The 200114 Big Mouth Hood can be fitted in place of the nozzle to give a 410 x 405mm collection area. Extraction from a woodturning lathe can present problems, using the 200797 100mm Stayput extraction hose fitted into this nozzle and set up behind the lathe makes for very efficient extraction.

Inc.vat Ex.vat Code

Adjustable Nozzle	£79.96	£66.63	410073
Dust Hood	£10.74	£8.95	200114

## Heat Shrink Sleeve

A heat shrink sleeve available in three sizes that can simply be held in place and shrunk to size with a heat gun. The perfect solution for odd sized dust extraction outlets. 510162 has a maximum diameter of 50mm shrinking down to 25mm, 510170 has a maximum diameter of 80mm and shrinks down to 40mm and the 510109 shrinks down from 100mm to 50mm. All sizes are at least 100mm long. Full manufacturers instructions for use available to download.



Inc.vat Ex.vat Code

Heat Shrink Sleeve 50-25mm	£3.95	£3.29	510162
Heat Shrink Sleeve 80-40mm	£4.96	£4.13	510170
Heat Shrink Sleeve 100-50mm	£6.95	£5.79	510109



## Numatic 2.9m x 32mm Hose

This is a 2.9 metre power tool hose with a 51mm threaded cuff, to fit the 210616 adaptor cuff. Will also fit all Numatic vacuum cleaners and extractors. Used with 610325 stepped rubber reducer, this can be adapted to fit virtually all hand held power tools with an extraction port or most small bench top woodworking machines.

Inc.vat Ex.vat Code

2.9m 32mm hose	£19.94	£16.62	210551
----------------	--------	--------	--------



## Numatic Stepped Hose Reducer

This is a very useful adaptor for connecting extraction hoses to a variety of power tools and other small machines. Can be used as it is or trimmed to length to suit a range of outlet diameters. Dimensions are: length 160mm, small end internal diameter 22mm, external diameter 30mm, large end internal diameter 38mm, external diameter 45mm.

Inc.vat Ex.vat Code

Stepped Hose Reducer	£12.95	£10.79	610325
----------------------	--------	--------	--------





## Numatic Power Tool Extraction Hose

A hose kit comprising 2.9m of 32mm hose and a stepped rubber reducer. The hose will fit onto any Numatic vacuum cleaner or workshop extractor whilst the stepped rubber reducer will allow connection onto almost any hand held power tool and some small bench top woodworking machines. An ideal solution for extraction in many circumstances.

**N.B. If using with the RDC100 or other 100mm vacuum extractors the adaptor 210616 will also be required.**



	Inc.vat	Ex.vat	Code
Extraction Hose & Adaptor	<b>£29.95</b>	£24.96	718085



## Numatic Reducer End Cap 100mm -51mm

Numatic reducer end cap 100mm - 51mm. Allows the fitment of the 718085 power tool hose to a 100mm sized hose or dust tube.

	Inc.vat	Ex.vat	Code
100mm to 51mm Reducer	<b>£13.45</b>	£11.21	210616



## Rubber Adaptors

Two useful items for connecting small diameter pipes into ducted systems. The ribbed part plugs into either 4" or 110mm ducting and either 32mm or 50mm pipes will push directly into the inner holes. No further fixings should be required.

	Inc.vat	Ex.vat	Code
Bung 110mm-32mm	<b>£11.95</b>	£9.96	341102
Bung 110mm-50mm	<b>£13.45</b>	£11.21	341103



## 102mm Hose Cuff

This is an easily fitted flexible rubber machine cuff for attaching hose to machinery. One end has a moulded thread that screws directly onto our 100mm clear hose, the other end of the cuff is a snug fit onto a 102-110mm diameter machine extraction port. Turn the cuff inside out if it does not match your hose spiral. It makes for an easy connection, and re-connecting the extractor from one to machine to another as simple as possible.

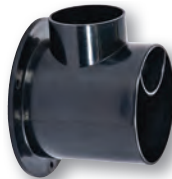
	Inc.vat	Ex.vat	Code
102mm Hose Cuff	<b>£19.94</b>	£16.62	610697

## Multiple Stepped Hose Adaptor

A stepped ABS hose adaptor with seven different sizes that can form perhaps two or more adaptors. Simply cut the section you require with a fine toothed saw. Diameters are 25mm, 50mm, 63mm, 75mm, 100mm, 125mm and 150mm (sizes stated are outside diameter).



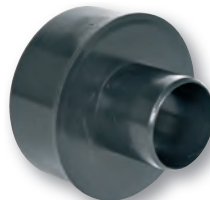
	Inc.vat	Ex.vat	Code
Stepped Adaptor	<b>£3.74</b>	£3.12	990091



## Axminster Dust Extraction Adaptor 100mm

- Useful adaptor for sawbenches and router tables
- Flanged 100mm adaptor with 62mm inlet
- Accepts standard 100mm and 63mm hoses

	Inc.vat	Ex.vat	Code
Adaptor 100mm	<b>£7.94</b>	£6.62	502568



## Hose Reducer 100mm O/D to 50mm O/D

Hose reducer 100mm OD (94mm ID) to 50mm OD (45mm ID).

	Inc.vat	Ex.vat	Code
Hose Reducer 100mm to 50mm	<b>£1.44</b>	£1.20	200092



## Hose Reducers

Used for converting one diameter of hose to another. Made from ABS plastic, with the exception of 510074 which is made from galvanised steel.

	Inc.vat	Ex.vat	Code
107mm OD / 102mm ID to 52mm OD / 46mm ID	<b>£7.50</b>	£6.25	510066
99mm OD / 94mm ID to 75mm OD / 69mm ID	<b>£1.60</b>	£1.33	510072
127mm OD / 123mm ID to 100mm OD / 92mm ID	<b>£2.94</b>	£2.45	510073
150-125mm	<b>£13.44</b>	£11.20	510074

## Hose Joiners

A quick and neat way of joining two lengths of hose together. The hose is secured by fixing clips. Available for 75 or 100mm hoses only.



	Inc.vat	Ex.vat	Code
Joiner for 75mm Hose	<b>£2.45</b>	£2.04	510028
ABS Joiner for 100mm Hose	<b>£2.75</b>	£2.29	510029



## Soil Pipe Adaptor

Although soil pipe is frequently utilised for dust extraction ducting, one problem which often crops up when using it is that the outer diameter of the soil pipe is some 112mm or approximately 4.5". To get around this problem we offer a special adaptor, 900063, to convert from the soil pipe to a 4" hose. Duct Tape (410221) can be used to produce a more secure joint.

	Inc.vat	Ex.vat	Code
100mm Soil Pipe Adaptor	<b>£5.94</b>	£4.95	900063



## Heavy-Duty Dust Extractor Waste Sacks

We have listed our common waste sacks, together with their layflat size (that is the width of the bag if laid flat on the floor i.e. half the circumference). They can be used for general waste collection as well as for dust extraction. Supplied as a pack of 10.

	Inc.vat	Ex.vat	Code
560 x 915mm Waste Sack Red (Pkt 10)	<b>£10.44</b>	£8.70	340068
1,065 x 1,370mm Waste Sack Green (Pkt 10)	<b>£23.95</b>	£19.96	900243
785 x 940mm Waste Sack Orange (Pkt 10)	<b>£12.44</b>	£10.37	410241
735 x 1,190mm Waste Sack Black (Pkt 10)	<b>£14.45</b>	£12.04	600223
760 x 1,065mm Waste Sack Blue (Pkt 10)	<b>£13.45</b>	£11.21	800345



## Quick Fit Metal Straps

Good strong metal spring clips that can be cut to size to suit the diameter required. Join two together for larger circumferences.

	Inc.vat	Ex.vat	Code
Quick Fit Metal Strap to 1140mm(45")	<b>£6.95</b>	£5.79	800425
Quick Fit Metal Strap to 1450mm(57")	<b>£6.95</b>	£5.79	800426

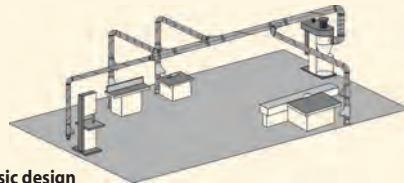


# The most common question asked is what size extractor do I need?

Many manufacturers will state the volume of air required for each machine in their manual. If not, note the size of the extraction port and use the chart below

outlet size	volume of air reqd
50	200 m <sup>3</sup> /hr
100	700 m <sup>3</sup> /hr
125	1100 m <sup>3</sup> /hr
150	1600 m <sup>3</sup> /hr
200	2800 m <sup>3</sup> /hr

**Example:** for a single machine with a 100mm port an extractor of a minimum of 700m<sup>3</sup>/hr will be sufficient. For multiple machines count the number of extraction ports per size, multiply the number of each size by the volume of air required. Then add the results per outlet size to give you a total volume of air required. This total is for all the machines operating at the same time. You then must decide which and how many machines will be used at the same time. Divide the total volume of air required by this number and add 500m<sup>3</sup>/hr. Choose an extractor that gives the airflow required by your calculations. Look at the main inlet size of the extractor, this is the size of the main duct to be used. In larger systems the ducting should get larger towards the extraction unit as more machines that are in use are added to maintain the correct air speed in the duct. This is very important; if the airflow is too low a build up of dust and debris will occur and is a fire and explosion risk. If the air speed is high then the system will be noisy but there will be no deposits in the ducting. Always use blastgates to close off airflow to machines that are not in use.



## Basic design

- Keep it simple, don't over complicate the system
  - Keep it straight, ducting runs should all be straight with as few bends as possible
  - Keep transfer duct as big as required by the extractor, this should get larger towards the extractor
  - Keep flexible duct to a minimum. If the machine cannot be connected to the system by solid ducting only then should flexible ducting be used for the final connection.
  - Keep branches joining the duct to a maximum of 45°. When branches join the main duct ideally they must enter at the side or the top at an angle of a maximum of 45° towards the direction of flow.
  - Fit Blastgates to maximise efficiency and balance the system
- The negative pressure inside the ducting draws air into the system. Incorrect sizing of the duct, too many bends coupled to lots of flexible hose induces losses into the system and in badly designed systems this is akin to leaving the handbrake on in a vehicle.

# Ducting

## Steel Reducers



Reducing adaptors are for stepping down in ducting size, i.e. from 150mm to 125mm. Available in a variety of sizes. These fit inside the ducting for a smooth air flow.

	Inc.vat	Ex.vat	Code
100-80mm	£11.94	£9.95	410083
100-125mm	£11.94	£9.95	410084
150-100mm	£14.45	£12.04	410085
150-125mm	£13.44	£11.20	510074
180-150mm	£20.94	£17.45	951628
200-150mm	£17.94	£14.95	951629

## Steel Saw Table Adaptors



With so many saw tables now with extraction both under the saw and over the top on the saw guard, it is often the case that the top guard extraction point is never used because there is no easy means of joining in the smaller hose. Here is a simple answer: two galvanised adaptors which go in line with the 100mm hose and provide a handy connection for the top guard hose, either 50mm or 38mm.

	Inc.vat	Ex.vat	Code
Y Junction 100-50mm	£38.95	£32.46	810353
Y Junction 100-38mm	£38.95	£32.46	810352
Black GP Hose 38mm x 2.5m	£20.95	£17.46	200783

## Suspension Rings



Simple clips to hold the ducting either suspended from a ceiling or standing out from a wall. A variety of diameters available. The clips have an M8 threaded hole. Use M8 threaded plated studding, available in 1m or 3m lengths. Each clip requires a M8/10 back plate (210502) and M8 studding (410113). By using studding the ducting can be suspended from the ceiling at the height required. By using short lengths of studding, ducting can be mounted directly onto a wall.

	Inc.vat	Ex.vat	Code
100mm	£4.94	£4.12	211466
125mm	£4.94	£4.12	211467
150mm	£4.94	£4.12	211468
200mm	£6.14	£5.12	211469

## Threaded Plated Studding

Used for mounting suspension rings to ceilings or walls.

	Inc.vat	Ex.vat	Code
8mm x 1m	£2.45	£2.04	410113
8mm x 3m	£4.44	£3.70	211612
10mm x 3m	£6.24	£5.20	211613

**Bulk discount available!**

## M8 Threaded Back Plate

Plated back plates for use with all suspension rings. Threaded M8 and with 2 mounting holes. Use M8 studding to mount the ducting the appropriate distance from the ceiling or wall.

	Inc.vat	Ex.vat	Code
Back Plate	£2.95	£2.46	210502

## Manometer 0-5 kPa

A simple 0-5kPa manometer, used to monitor the air flow within ducting used as part of a dust/chip extractor system (LEV). The fitting of a manometer on each "hood", e.g. extraction point, is recommended as a method of daily monitoring of the system's performance by the HSE in their LEV checklist for employers. This unit provides an "at a glance" monitoring of the system at each extraction point each time it is used, thus satisfying the requirements under the HSE's guidance. These are used by our own Extraction Installation team when fitting new systems.



	Inc.vat	Ex.vat	Code
Manometer, 0-5kPa	£89.94	£74.95	210675

## Ducting

Available in a variety of diameters to suit all applications. Sections of duct can be joined together with short joining lengths, which fit on the inside of the duct. The perfect solution for extraction systems.



	Inc.vat	Ex.vat	Code
100mm X 1m Ducting	£8.45	£7.04	410229
125mm X 1m Ducting	£10.94	£9.12	951611
150mm X 1m Ducting	£13.94	£11.62	951612
200mm x 1m Ducting	£19.94	£16.62	951613
100mm X 2m Ducting	£16.44	£13.70	410230
125mm x 2m Ducting	£20.94	£17.45	951614
150mm x 2m Ducting	£26.94	£22.45	951615
200mm x 2m Ducting	£39.95	£33.29	951616

## Fixture Joiners

A short length tube used to join two fixtures together. It fits over the outside of the fixtures (bends, T or Y junctions etc.) and can be secured either with duct tape, self-tapping screws or pop rivets. The 100mm comes in a pack of 5, the other sizes are in packs of 1.



	Inc.vat	Ex.vat	Code
Fixture Joiner 100mm (Pkt 5)	£13.94	£11.62	410232
Fixture Joiner 125mm (ea)	£3.05	£2.54	211461
Fixture Joiner 150mm (ea)	£2.94	£2.45	211462
Fixture Joiner 200mm (ea)	£3.35	£2.79	211463

## Steel Elbows

To provide a smooth bend within a duct system. Fits inside the duct tubing. Use Fixture Joiners to connect elbows together.



	Inc.vat	Ex.vat	Code
90° Elbow 100mm	£9.74	£8.12	410013
90° Elbow 125mm	£11.94	£9.95	951601
90° Elbow 150mm	£17.45	£14.54	951602
90° Elbow 200mm	£23.94	£19.95	951603
45° Elbow 100mm	£7.44	£6.20	400499
45° Elbow 125mm	£8.94	£7.45	951604
45° Elbow 150mm	£12.95	£10.79	951605
45° Elbow 200mm	£16.94	£14.12	951606

## Branch Tee

Branch Tees are the best way to lead off to a machine from a duct system. Having a smooth inner surface and a 45° angle there is no obstruction to the airflow. Also, these are available in a range of sizes to suit the duct and machine extraction outlet.



	Inc.vat	Ex.vat	Code
100mm off 100mm at 45°	£34.45	£28.71	951618
100mm off 125mm at 45°	£34.96	£29.13	951619
100mm off 150mm at 45°	£36.46	£30.38	951620
100mm off 200mm at 45°	£41.95	£34.96	951621
125mm off 125mm at 45°	£36.46	£30.38	951622
125mm off 150mm at 45°	£37.45	£31.21	951623
125mm off 200mm at 45°	£44.45	£37.04	951624
150mm off 150mm at 45°	£45.95	£38.29	951625
150mm off 200mm at 45°	£49.45	£41.21	951626
200mm off 200mm at 45°	£55.50	£46.25	951627

## Ducting Joiners

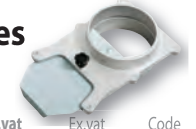
A short length of tube used to join two lengths of ducting together. It fits inside the duct and can be secured either with duct tape or short self tapping screws. Pack of 5.



	Inc.vat	Ex.vat	Code
Duct Joiners 100mm (Pkt 5)	£13.94	£11.62	410228
Duct Joiner 125mm (ea)	£3.05	£2.54	951607
Duct Joiner 150mm (ea)	£3.05	£2.54	951608
Duct Joiner 200mm (ea)	£3.44	£2.87	951609

## Aluminium Blastgates

Aluminium blastgates, stronger than plastic and with a locking screw.



	Inc.vat	Ex.vat	Code
Blastgate for 100mm Hose	£7.94	£6.62	340920
Blastgate for 125mm Hose	£9.95	£8.29	200071
Blastgate for 150mm Hose	£11.45	£9.54	200070

## Twin Bends

90° and 45° twin bends are used when splitting the system off, i.e. to lead into another room or to the other side of a workshop. Offering a smooth air flow with many advantages over the more usual 90° Tee junction. A selection of 4 sizes and 2 angles available.



	Inc.vat	Ex.vat	Code
100mm 90° Twin Bend	£64.94	£54.12	951630
125mm 90° Twin Bend	£72.95	£60.79	951631
150mm 90° Twin Bend	£83.94	£69.95	951632
200mm 90° Twin Bend	£109.94	£91.62	951633
100mm 45° Twin Bend	£46.94	£39.12	951634
125mm 45° Twin Bend	£49.94	£41.62	951635
150mm 45° Twin Bend	£52.94	£44.12	951636
200mm 45° Twin Bend	£64.94	£54.12	951637

## End Cap

End caps are used to seal the end of ducting. Useful to allow an extension at a later date, or to provide a permanent seal.



	Inc.vat	Ex.vat	Code
100mm	£3.95	£3.29	211476
125mm	£5.04	£4.20	211477
150mm	£5.54	£4.62	211478
200mm	£7.25	£6.04	951610





### Numatic NSP 180A Vacuum Cleaner



This vacuum is a very clever design based on simplicity. Benefiting from the new NST sound reduction and AutoSave energy conservation technology, the two stage turbine EcoTwin motor has two power levels. The HepaFlo filter bags ensure the highest efficiency suction combined with clean and convenient emptying when full. The unique caddy on top, provides somewhere for the cable, tools, duster and polish. This cheerful little vacuum cleaner will follow you around and make light work of all your cleaning chores. Powerful enough for industrial use and light enough for the home user. Made in the UK and having a 2 year warranty for peace of mind (except tools). Replacement HepaFlo Filter Bags NVM-1CH available separately.

	Inc.vat	Ex.vat	Code
NSP 180A Cleaner - 230V	£94.96	£79.13	950370
Hepaflo Filter Bags NVM-1CH (Pkt 10)	£8.45	£7.04	210628

### Accessories



#### Numatic Easy Ride AiroBrush

The AiroBrush is an exceptional floor nozzle developed to provide quick and efficient carpet care. The rotary action is especially effective for the removal of threads and pet hairs. It grooms the whole carpet and will allow power brush results where uprights can rarely go. A truly high performance power brush suitable for the Henry range and other machines with a 32mm pipe fitting.

	Inc.vat	Ex.vat	Code
Easy Ride AiroBrush	£44.94	£37.45	702820



#### Numatic 2.9m x 32mm Hose

This is a 2.9 metre power tool hose with a 51mm threaded cuff will fit all Numatic vacuum cleaners and extractors. Used with 610325 stepped rubber reducer, this can be adapted to fit virtually all hand held power tools with an extraction port or most small bench top woodworking machines.

	Inc.vat	Ex.vat	Code
2.9m 32mm hose	£19.94	£16.62	210551



#### Numatic Stepped Hose Reducer

This is a very useful adaptor for connecting extraction hoses to a variety of power tools and other small machines. Can be used as it is or trimmed to length to suit a range of outlet diameters. Dimensions are: length 160mm, small end internal diameter 22mm, external diameter 30mm, large end internal diameter 38mm, external diameter 45mm.

	Inc.vat	Ex.vat	Code
Stepped Hose Reducer	£12.95	£10.79	610325



#### Numatic Power Tool Extraction Hose

A hose kit comprising 2.9m of 32mm hose and a stepped rubber reducer. The hose will fit onto any Numatic vacuum cleaner or workshop extractor whilst the stepped rubber reducer will allow connection onto almost any hand held power tool and some small bench top woodworking machines. An ideal solution for extraction in many circumstances.

**N.B. If using with the RDC100 or other 100mm vacuum extractors the adaptor 210616 will also be required.**

	Inc.vat	Ex.vat	Code
Extraction Hose & Adaptor	£29.95	£24.96	718085

#### Numatic Filter Bags for Henry & Friends

Genuine Numatic Filter Bags for Henry, friends and other Numatic vacuums.

	Inc.vat	Ex.vat	Code
NVM-1CH (Pkt 10)	£8.45	£7.04	210628
NVM-3AH (Pkt 10)	£15.46	£12.88	211199
NVM-4BH (Pkt 10)	£18.95	£15.79	211015
NVM-2BH (Pkt 10)	£10.96	£9.13	211175
Std Repl Tritex Filter	£24.95	£20.79	702821
"Henry" Microtex Filter	£38.95	£32.46	610327



### Numatic HVR-200A 'Henry' Vacuum Cleaner

	Inc.vat	Ex.vat	Code
Red 'Henry' Vacuum Cleaner 230V	£114.95	£95.79	702705

#### Comparison Chart - Vacuum Cleaners

Model	Numatic NSP 180A	HVR-200A
Rating	Industrial	-
Power	800W	1,200W
Container Volume	8 L	9 litres
Air Volume	1,800 litres/min	2520 litres/min
Noise Level	65dB	63dB
Suction	2,000mm	2,600mm
Air Flow	-	42 l/sec
Overall L x W x H	340 x 340 x 340mm	340 x 340 x 370mm
Weight	5.8kg	6.6kg

The next generation Henry and Hetty, updated and improved to meet today's stricter requirements. Full TwinFlo two-stage professional motor giving exceptional performance; with AutoSave you get 50% Energy saving - 30% Improved Air Quality - 20% Lower Noise Level. Every time you switch these machines on you will automatically start on the economy Lo setting, only if more power is needed to cope with extra dirt do you need to push the red switch to operate in Hi mode. All the favourite attributes of toughness and ease of use are still there to ensure long life and exceptional performance. Equally at home in your house, workshop or carried in the van for use on site where Henry will swallow your mess with ease. Hetty is just as tough, and may just add a dash of panache to proceedings! Features such as a 10mtr cable with re-wind, stainless steel wand with sturdy tools and hose, a giant Tritex filter to ensure what goes in stays in, and a 1,200W TwinFlo motor are all included. The addition of the rubber hose reducer (our part 610325) enables many hand held power tools to be connected, especially good performance on Sanders, circular saws and planers. The addition of the quilted Microtex filter (610327) when used with Hepa-Flo filter bags







## Numatic NQS350B-22 Vacuum Cleaner

The NVQ350B-22 low noise vacuum is tough... very tough, this is the model that has proved itself to outlast the rest in the most arduous of applications. The all-steel power head is low noise; with 1.200W TwinFlo® performance; Hi/Lo power operation and, in every way, just about as good as you can get, even down to the Nucleable plugged replaceable cable system and an air blower facility. Filtration is to the Tritex standard with the added advantage of giant HepaFlo 15 litre dust bags, and easy, clean emptying. The all-steel container is mounted on, but removable from, a rugged wheeled tubular chassis which really does give it go anywhere mobility. A full range of 32mm accessories to an equally high standard is supplied for all cleaning applications.



## Numatic NQS250B Vacuum Cleaner

The NQS250B is perhaps the most rugged small vacuum cleaner you can get. All steel construction with a tough epoxy finish, this machine will perform quietly, efficiently and effectively for many years. Features include Hi-Lo power levels, 4-wheel mobility chassis and Tritex filtration. Supplied with a full 32mm tool kit with stainless steel tubes this machine is the reliable vacuum cleaner you have always been looking for!



	Inc.vat	Ex.vat	Code
NQS250B Vacuum Cleaner 230V	£224.95	£187.46	610336
Odour Control Filter (305mm machines)	£38.45	£32.04	610328
HepaFlo Filter Bags NVM-1CH (Pkt 10)	£8.45	£7.04	210628

	Inc.vat	Ex.vat	Code
NVQ350 Vacuum Cleaner 230V	£269.95	£224.96	610337
HepaFlo Filter Bags NVM-2BH (Pkt 10)	£10.96	£9.13	211175
Odour Control Filter (305mm machines)	£38.45	£32.04	610328

## Numatic NVDQ900-2 Vacuum Cleaner

The 900 series sets an entirely new standard in design and construction of industrial vacuum cleaners, built by professionals to ensure high performance coupled with reliability and long service life.

The use of Structofoam throughout this machine really makes it as strong as a truck, whilst its innovative design makes it every bit as easy to use as smaller machines. Power and performance are to the full TwinFlo® specification with a dual 2-stage primary filter system as standard. The rugged container is classic Structofoam engineering and the giant wheels and heavy duty castors provide excellent mobility and transit even in the most demanding applications. The standard 38mm (1 1/2") accessory kit includes an extra long double swivel hose; stainless steel tubes; 400mm (16") Structofoam floor nozzle and additional useful accessories.



	Inc.vat	Ex.vat	Code
NVDQ902 Vacuum 230V	£469.94	£391.62	610326
HepaFlo Filter Bags NVM-4BH Pkt 10	£18.95	£15.79	211015

### Comparison Chart - Vacuum Cleaners

Model	NQS250B	NVQ350B-22	NVDQ900-2
Rating	Industrial	Industrial	Industrial
Power	1,200W	1,200W	2.2kW
Container Volume	9 litres	14 litres	40 litres
Air Volume	2400 litres/min	2,400 litres/min	5400 litres/min
Noise Level	56dB	56dB	66dB
Suction	2,600 mbar	2,600mbar	2,000 mbar
Overall L x W x H	340 x 340 x 395mm	395 x 350 x 560mm	800 x 490 x 880mm
Weight	8.3kg	11.7kg	25kg





### Numatic George GVE370-2 Wet or Dry Vacuum Cleaner

The Numatic George Wet and Dry Vacuum/Carpet Cleaner is supplied with a fully comprehensive tool kit including a 1.9m Nuflex bayonet hose and 3.0m Cleantec extraction hose, 3 piece stainless steel tube set, a combination floor nozzle (for carpets and hard floors), fish tail 'see thru' carpet extraction nozzle, 300mm dual scrub/wet pick up nozzle, upholstery 'see thru' extraction nozzle, trigger valve and spray assembly, Tritex filter, round dusting brush, crevice tool, accessory adaptor, upholstery nozzle and slide.



	Inc.vat	Ex.vat	Code
Numatic George GVE370 Vacuum - 230V	£229.96	£191.63	500418
Hepaflo Filter Bags NVM-2BH (Pkt 10)	£10.96	£9.13	211175



### Numatic WV380-2 Wet or Dry Vacuum Cleaner

The WV-380s are, by design, wet or dry vacuum cleaners that perform totally without compromise in either mode. When you want to operate as a dry machine performance must be as good as a dry-only machine, with big filters and the option of giant HepaFlo disposable dust bags ensuring a high standard of operation. Similarly, when required for wet work, a quick switch of the dry filter for the wet float valve and a change of floor nozzle will give you equally professional performance and a clean, dry floor at the end of it all. Extremely ruggedly built, and amply powered by a 1,200W "Twinflo" motor and supplied with a full wet and dry floor cleaning kit with stainless steel tubes.



	Inc.vat	Ex.vat	Code
Numatic WV380 Vacuum - 230V	£174.95	£145.79	990003
Hepaflo Filter Bags NVM-2BH (Pkt 10)	£10.96	£9.13	211175



### Numatic NTD 2003-2 Wet & Dry Vacuum Cleaner

With a large capacity coupled with outstanding performance this vacuum can be used for a multitude of tasks such as cleaning up flooded areas, spillages and large amounts of waste debris. It incorporates two 1,200W "Twinflo" bypass vacuum motors. A "Permatex" secondary filter is fitted above the metal float assembly providing a wet/dry option when in use. Filtration levels can be further enhanced by adding additional filtration. A 76mm cyclonic entry with 51mm-32mm reducer is fitted as standard enabling the vacuum to be used with a multitude of accessories. The stainless steel drum is fitted with a 32mm dump hose for ease of emptying, and a heavy duty transit chassis. Each vacuum comes complete with a 38mm kit BB7 as standard.



	Inc.vat	Ex.vat	Code
Wet & Dry Vacuum Cleaner 230V	£879.95	£733.29	702712

#### Comparison Chart - Vacuum Cleaners

Model	GVE370-2	WV380-2	NTD 2003S
Rating	Trade	Industrial	Industrial
Power	1,200W	1,200W	2 x 1,200W
Container Volume	15 litres (Dry) - 6 litres (Wet)	15 litres (Dry) - 9 litres (Wet)	80 litres
Air Volume	2,700 litres/min	2,700 litres/min	2,500mm
Noise Level	73dB	66dB	80 litres/sec
Overall L x W x H	355 x 355 x 500mm	355 x 355 x 510mm	560 x 660 x 1145mm
Weight	9.5kg	8.6kg	30.5kg