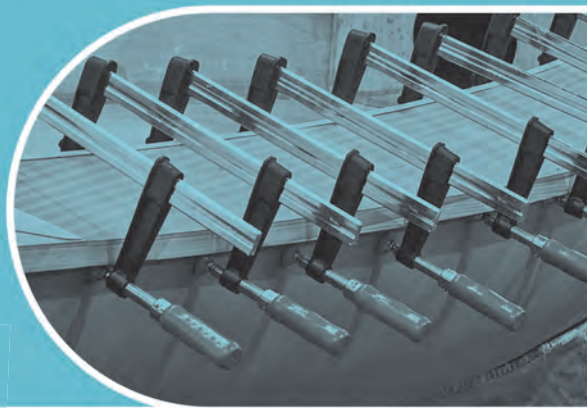


Cramps, Clamps & Vices



Vices



Bulk discount available*

Axminster Quick Release Carpenter's Vices

This design, made in cast iron has stood the test of time and professional use with a trigger quick release for speedy jaw adjustment. The jaws are drilled and tapped ready to receive your own hardwood liners and the front jaw sports an adjustable 'dog'. A bench is just a wooden table until you fit a decent vice. These vices will make you and your bench look like true professionals even if it is only in the evenings and at weekends. The vices are available in two jaw widths: 175mm(7") opening to 195mm(7.3/4") and 225mm(9") opening to 250mm(10"). All are equipped with an adjustable front dog.

	Inc.vat	Ex.vat	Code
175mm(7") Vice	£57.95	£48.29	310364
225mm(9") Vice	£72.95	£60.79	310368

Bulk discount available*



Axminster Woodworker's Vices

Manufactured from close-grained grey cast iron and accurately machined to ensure smooth sliding movement. The solid steel guide rods give the vices a smooth and true parallel action, with a maximum jaw opening capacity of 200mm. Jaws have a "toe-in" feature so that, when fully closed, they meet only at the top, providing even clamping on the whole depth of the workpiece. The steel main screw has buttress threads for smooth, accurate and responsive adjustment. Body and sliding jaw have provision for attaching wooden liners to protect the vice, workpiece and tools.

	Inc.vat	Ex.vat	Code
150mm Vice	£17.94	£14.95	220026
175mm Vice	£29.94	£24.95	220027



York Automatic Quick Release Carpenter's Vice

Well built traditional carpenter's vices complete with automatic quick release and front dog. Very well engineered and well finished. Ideally the jaws should be lined with hard wood in the usual way. Maximum capacity fully open the 225mm(9") has a 355(14") capacity, whilst the 175mm(7") opens to a maximum of 210mm(8").

	Inc.vat	Ex.vat	Code
175mm(7")	£68.94	£57.45	202290
225mm(9")	£99.95	£83.29	100730

Table Vices



Fixed Head

Swivel Head

75mm Fixed & Swivel Head Vices

A pair of well made, all cast iron bodied small engineer's vices. With smooth action thanks to the twin parallel bars and correctly tapered jaws. The lower part of the jaws will accept round stock up to 30mm. The vice may be clamped onto a bench or table top with a maximum thickness of 47mm. The 700086 vice offers the addition of a swivelling base, thus further increasing its usefulness. These are very useful vices, small but offering great value for money.

	Inc.vat	Ex.vat	Code
75mm Fixed	£19.94	£16.62	700085
75mm Swivel	£22.94	£19.12	700086



PROXXON

Proxxon FMZ Precision Vice

Quickly and securely clamps to work benches and tabletops up to 60 mm thick. Stands freely or can be fixed down. Rotates in all directions, including flush to the surface. 75 mm jaws with removable rubber covers. Zinc die-cast vice with ball and socket. Jaws also with vertical and horizontal V-slots. Max. clamping width 70mm. Weight 1.6 kg.

	Inc.vat	Ex.vat	Code
FMZ Vice	£29.94	£24.95	702052

PROXXON



Proxxon FMS 75 Precision Vice

Zinc die-casting with ball and socket which rotates in all directions (even downwards). 75mm jaws with protective covers (for delicate workpieces). Jaws also with vertical and horizontal V-slots for clamping round workpieces. The strong suction cup facilitates instantaneous fixing to any smooth, flat surface. May also be screwed down. Max. clamping width 70mm.

	Inc.vat	Ex.vat	Code
FMS 75 Vice	£29.94	£24.95	486353

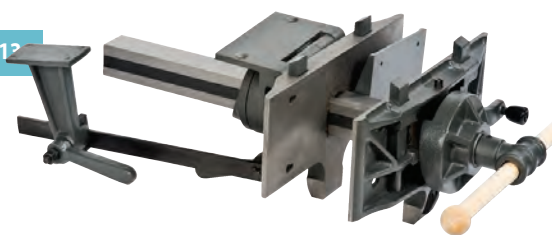


Bulk discount available*

Axminster Woodworker's Vice with Table Clamp

A useful robust vice with a maximum jaw opening of 125mm. The body and front plates are made from close grained cast iron. Body and sliding jaw have provision for attaching wooden liners. The jaws are toed-in which allows them to meet only at the top, providing even clamping on the whole depth of the workpiece. The vice can either be bolted directly to the bench or secured with the clamping screw to benches of up to 50mm thickness.

	Inc.vat	Ex.vat	Code
150mm Vice	£19.94	£16.62	220025



Axminster Pattern Maker's Vice

With a jaw width of 350mm(13.7/8") and a maximum opening of 330mm(13"), the vice alone has huge capacity. But it may be worth mentioning the camlock release, which allows the jaw to rotate 360° in either direction or the second camlock allowing the vice to swing up to 90° on its mounting plate, in both cases the vice can be locked at any desired angle. Additional features include four integral dogs (two front and two rear) to clamp round/oval objects above the vice etc. A lever with which the front jaw can be racked up to 5° either way to grip slightly tapered objects horizontally; an auxiliary rear jaw, pivoted to grip tapered objects vertically and a small 50mm(2") wide jaw on the underside for small work, with keyhole slots in both front and rear jaws for quick replacement or removal of self or custom made wooden jaw pads.

	Inc.vat	Ex.vat	Code
Vice	£194.94	£162.45	340200

STANLEY

Stanley Multi Angle Hobby Vice

The Stanley Multi Angle Hobby Vice with its patented ball joint system allows you to rotate your project a full 360° and lock it at any angle in multiple positions for convenience and easy access. It has a 75mm wide jaw, opening to 70mm that will hold a wide range of items and has removable rubber jaw covers ideal for protecting delicate finishes. The large C-clamp mount is suited to heavy duty applications and attaches to work surfaces up to 60mm thick. Throat depth 40mm, clamping capacity 70mm, clamping Force 25kg.



	Inc.vat	Ex.vat	Code
Multi Angle Hobby Vice	£18.95	£15.79	953690

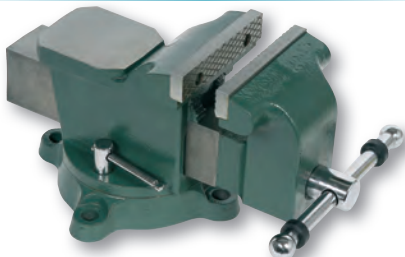
BESSEY

Bessey Table Vice

This table vice is suitable for both parallel clamping and clamping at angle (upto 25°). It can be easily attached to that edge of your working surface using the two clips supplied. Maximum capacity of 100mm with a jaw width of 90mm.



	Inc.vat	Ex.vat	Code
100 x 90mm	£23.94	£19.95	952126



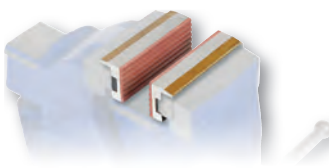
Axminster Mechanic's Vices

No-nonsense, swivelling mechanic's vices, with either 100mm(4") or 125mm(5") wide jaws, which should satisfy the needs of every mechanic, amateur or professional. The swivelling action is locked with two tommy bars, the tightening handle is fitted with rubber bump stops and there are additional semi-circular serrated jaws underneath the main jaws for holding circular items. The bases are equipped with four 10mm diameter securing holes.

	Inc.vat	Ex.vat	Code
100 x 70mm	£39.95	£33.29	100017
125 x 100mm	£48.95	£40.79	100018

Axminster Magnetic Vice Jaws

Hard rubber faces protect your work while the aluminium body of the protector houses a magnetic strip, which holds them in place on your vice. Essential when holding softer metals and finished work in your vice and cheap enough to be sacrificial when the need arises.



	Inc.vat	Ex.vat	Code
75mm	£5.45	£4.54	340189
100mm	£5.94	£4.95	340190
125mm	£6.95	£5.79	340191



Axminster Parrot Vice

The Parrot Vice swivels through 360° in both the vertical and horizontal positions, tightening the jaws locks the entire vice in place. An ingenious cam arrangement beneath the jaws ensures the vice locks rock solid when gripping an item. Slightly backing off on the handle means you can rotate the vice for better access to your work without having to remove it from the jaws, or change it from vertical to horizontal. The jaws are 89mm wide,



57mm deep and open to a maximum of 127mm. Holes in the jaws allow you to mount custom-made wooden jaws. The base has three fixing holes on 120mm centres. The cast iron construction is carefully machined and the total weight 7.5kg.

	Inc.vat	Ex.vat	Code
Parrot Vice	£34.94	£29.12	950968



125mm Mechanic's Multi Purpose Bench Vice

This is a very comprehensive vice for mechanics and engineers. Constructed robustly in cast iron, it has a host of features not normally found elsewhere. The whole jaw assembly is mounted on a single tube that allows the jaws to be pivoted 180° either side of vertical. The whole vice can be swivelled through 360°, thus allowing access to all parts of an item wherever you wish. The jaws are ground and cross hatched for maximum grip, and you can grip round section material up to 50mm in the integral pipe grips. These are situated on the "downside" of the jaws, just swivel the jaws to bring them to the "topside". A second set of jaws to hold square material is also part of this end of the jaws. Finally, an integral anvil of a good size is provided. This is a seriously good vice that any engineer or mechanic will value. The fixing holes are 13mm diameter with centres on a 125mm square.

	Inc.vat	Ex.vat	Code
125mm(5")	£86.94	£72.45	700084

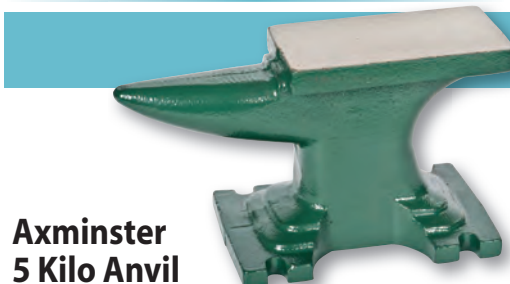


York Mechanic's Vices

A quality mechanic's vice with a swivelling facility of 35° in either direction and hardened steel jaws (RC52-54). To the rear of the vice a peining anvil is provided avoiding the need to hammer directly on the jaws.

	Inc.vat	Ex.vat	Code
100 x 105mm	£74.94	£62.45	990082

Anvils



Axminster 5 Kilo Anvil

This handy 5-kilo (11 lb) anvil has a flat working surface 125mm x 60mm with a 90mm long tapering horn. Four cut-outs are provided in the base for permanent fixing if required. Made of cast iron.

	Inc.vat	Ex.vat	Code
5 Kilo Anvil	£15.95	£13.29	110149

Miniature Anvil with Stand

Miniature anvil which comes with stand is ideal for jewellery making and intricate jobs. Overall height 70mm, width 125mm

	Inc.vat	Ex.vat	Code
Miniature Anvil	£17.94	£14.95	700325



Tail Vices



Veritas Tail Vice

This vice can be used for both types of tail vice with or without a shoulder. It has guide plates 50mm(2") wide by 380mm(15") long. The maximum opening is 200mm(8") (less the thickness of your wooden jaws). The single-lead Acme screw is 22mm(7/8") in diameter.

	Inc.vat	Ex.vat	Code
Tail Vice	£59.94	£49.95	474719
Turned Wooden Handle	£5.75	£4.79	210538



Veritas Twin Screw Vice

This is the only non-racking, parallel action, full width end vice on the market. It applies an even clamping force along the jaws regardless of which of the screws is tightened. Even better, a spring loaded locking pin enables the connecting chain to be disengaged for controlled 'skewing' when slightly tapered workpieces need to be held. Maximum capacity 300mm. The vice is easy to fit to an existing bench, requiring only the addition of an end cap drilled for the vice nuts and fixing bolts plus the vice jaw itself. The telescoping chain cover lets you set the spindles from 11" to 20" apart. Enough chain is included for 16" spacing, adequate for benches up to 32" wide. The kit includes the two vice screws, nuts, chain, chain cover, wooden handles, all the hardware and full fitting and mounting instructions (wooden jaws not included).

	Inc.vat	Ex.vat	Code
Twin-Screw Vice	£209.94	£174.95	500226



Veritas Quick Release Sliding Tail Vice

This Veritas version of a tail vice either quickly incorporates into a new bench or easily retrofits to an existing bench without major surgery. The body is ductile iron with zinc-alloy end plates, steel shafts and guide rods, and a maple handle. Installation is straightforward. All the necessary hardware is included, all you need add is the timber for the jaw. The quick-release mechanism has a simple on-off lever that engages or disengages the Acme-threaded screw. The end plates are symmetrical, so you can install the T-handle and quick-release lever in a right- or left-handed orientation, allowing you to mount the vice at either end of your bench. The mechanism can apply force (up to 135kg) in both clamping and spreading applications – something not possible with other quick-release tail vices. Maximum travel is 195mm (7.3/4"). All the vice requires is an unobstructed mounting area at least 430mm x 156mm (17" x 6.1/8") on the underside of the bench top. Made in Canada. Patent pending.

	Inc.vat	Ex.vat	Code
Sliding Tail Vice	£329.94	£274.95	950966

Vice Screws



York Front Vice Screw

This vice screw can be incorporated into any workbench, especially the front vice assembly, or made into a small press. With 28mm diameter handle socket and recessed back nut, the thread is precision rolled to give extra strength and has a 5mm pitch. The 510200 has a thread diameter of 28mm with overall length of 330mm and a screw travel of 165mm.

	Inc.vat	Ex.vat	Code
330mm	£20.45	£17.04	510200



York Tail Vice Screw

For the manufacture of traditional tail vices and of course many other workshop applications where extra strength is required. The 510199 screw thread runs in quality grey cast iron flanged nuts, the handle socket is 28mm in diameter. The thread is precision rolled to give extra strength and has a 5mm pitch. It has a 28mm diameter thread with overall length of 535mm and an open capacity of 390mm.

	Inc.vat	Ex.vat	Code
535mm	£24.44	£20.37	510199



York Universal Vice Screw

A universal bench screw for the manufacture of vices, presses etc. Manufactured to the very same specification as the tail and front vice screw with a round vice nut, 24mm x 5mm thread, an overall length of 400mm and a usable threaded stroke of 320mm.

	Inc.vat	Ex.vat	Code
400mm	£21.74	£18.12	510203

York Plain Screw Vice Guide

Made for woodworkers wanting to make their own vice assemblies, with strong precision rolled threads, twin guides and 28mm cast iron handle socket. Exceptionally sturdy, very easy to use and totally distortion free, these vice guides are most impressive pieces of engineering. The 510202 incorporates a sturdy 28mm x 5mm thread with an overall length of 550mm and open capacity of 350mm, whilst the lighter 510201 has a 24mm x 5mm thread with an overall length of 390mm and open capacity of 220mm.

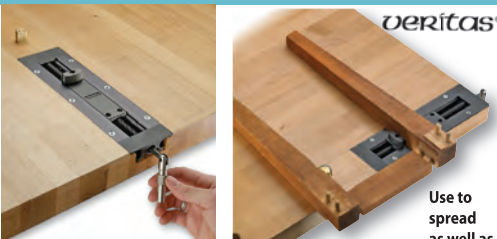
	Inc.vat	Ex.vat	Code
390mm	£33.44	£27.87	510201
550mm	£53.94	£44.95	510202

York Quick Release Vice Guides

A very welcome development of an old favourite; vice guides with an ingenious quick release feature for rapid re-setting of the jaws. The mechanism is hidden underneath so it is difficult to work out exactly how it operates but take our word for it, it does work and very efficiently too. All you have to do is apply a half turn to the screw and the vice jaws slide in or out in no time. Construction of both models is impressively strong with only steel and cast iron being employed. The overall size of the smaller one (excluding the protruding handle socket) is 310mm x 175mm with a 24mm diameter screw whilst the larger one is 470 x 265mm with a 28mm diameter screw.

	Inc.vat	Ex.vat	Code
310mm	£54.95	£45.79	100731
470mm	£74.94	£62.45	100732

Miscellaneous Vices



Veritas Inset Vice

This vice is easy to install in any bench with a top thickness at least 31.7mm (instructions, template and mounting hardware provided). The vice fits flush to your bench top and functions in a similar manner to a wagon vice. If your bench doesn't have a tail vice then the Veritas Inset Vice coupled with a row of dog holes and a bench dog is exactly what you need. A knurled stainless-steel toggle handle turns a 13mm diameter Acme-threaded steel rod giving a travel of up to 100mm to a moving plate. A 13mm tall dog locates into this plate in one of two positions. Two positions allowing you to have dog holes on your bench top as far apart as 195mm. When the vice is not in use, removing the jaw leaves you with an unobstructed work surface. Constructed of machined steel castings and anodized aluminium extrusions. Made in Canada

	Inc.vat	Ex.vat	Code
Inset Vice	£81.95	£68.29	952803



Festool Vacuum Clamping System

FESTOOL
3 year
Warranty
Registration reqd

This Festool product is full of innovation, easy to use, unrivalled for build quality and has that "must have" appeal. Easily portable at just over 16kg complete, and comprising 2 parts, the pump unit is built into its own Sustainer box with external connections for power and vacuum hose, together with the operating switch and vacuum gauge. At 68dB(A) it's so quiet you will hardly know it's running. A second box houses the vacuum clamp unit plus hoses and a foot pedal control. The clamp kit has a 215mm suction base as standard which is able to rotate through 360° and tilt through 90°. The whole clamping assembly is based on a die cast alloy housing, and cleverly, it can clamp itself to your work table! The suction pad has a central push valve to activate the suction automatically when you place the workpiece onto the pad, the suction is then released by the foot pedal control. With up to 90kg of suction force your work is really clamped. For large work an extra clamping kit can be purchased, complete with all connectors etc, and in its own Sustainer box. This will enable doors and other large items to be held. These clamps will hold wood, plastics, MDF, glass and many other materials. You can then sand, plane, rout, machine, assemble and finish many types of work in safety and in a manner that will not damage or contaminate the work. If you are a joiner, boat builder, musical instrument or cabinet maker, or wish to display your work at an exhibition, this system will provide a long term solution to many work holding problems.

	Inc.vat	Ex.vat	Code
Vac Sys Unit 1	£919.94	£766.62	703863
Vac Sys Additional Clamp Kit	£424.94	£354.12	702864



Universal Work Holder & Hand Vice Set

The Universal Work Holder was originally designed as an engraver's tool. This extremely useful tool is comfortable to hold and easy to use. The pin arrangement can easily be modified to suit practically any shape of work. The setting of the pins allows work to be gripped either externally or internally. The handle unscrews allowing the vice to be gripped by another vice or hand held. Diameter is 50mm with a maximum capacity of 58 mm, length including pins 140mm.

The Hand Vice is all steel with an 8mm wide jaw opening to 3mm. The knurled handle is hollow allowing thin wires or rods to pass through and be gripped in the jaw. Overall length 130mm.

	Inc.vat	Ex.vat	Code
Work Holder & Pin Vice	£18.44	£15.37	600826



Handy Vice

130mm length hand held steel vice with a comfortable hexagonal wooden handle for gripping small components e.g. pins, wire, rods etc. The spring loaded 15mm wide jaws are operated by turning the handle, maximum opening 6mm. The jaws have vertical and horizontal vee grooves and there is a through hole along the centre of the handle to accept long pins or wires.

	Inc.vat	Ex.vat	Code
Handy Vice	£15.24	£12.70	600773



Workshop Hand Vice

A forged steel, spring loaded hand vice, tightened by a large wing nut. 125mm(5") overall length. The jaws 50mm(2") wide, opening to a maximum of 28mm(1.1/8"). Best suited to working small items, the vice can either be gripped in one hand or held between the jaws of a larger vice allowing better access to a workpiece.

	Inc.vat	Ex.vat	Code
Hand Vice	£4.74	£3.95	510198

Model Craft Spring Loaded Mini Vice

This miniature spring-loaded vice for holding small parts for detailed work has a jaw capacity of 35mm and is 100mm in length. It can either be used by itself or with a larger table-mounted vice where the object needs to be held more delicately.



	Inc.vat	Ex.vat	Code
Spring Loaded Mini Vice	£6.44	£5.37	504810



Cord Frame Clamp

A simple clamp that provides clamping flexibility and versatility on projects like picture framing, chair making and cabinet work. The set includes 7 clamping corners each with 3 fixed angles of 90°, 120° and 135° and 2 metres of 50mm wide nylon band complete with tension locking device.

	Inc.vat	Ex.vat	Code
Frame Clamp	£4.94	£4.12	340435



Nobex Framing Cord Clamp

Can be used for picture framing. Each corner that the cord passes through is tough, yet flexible plastic. The larger corner has a cleat to lock it absolutely tight and is quick and easy to use. Includes 2.5m of nylon cord for a good size frame and 4 or 8 unique flexible corners.

	Inc.vat	Ex.vat	Code
Cord Clamp - 4 Corners	£5.75	£4.79	477119
Framing Cord Clamp 8 corners	£8.24	£6.87	476662

Steel Band Frame Clamp

A tempered steel band is used to maintain even clamping pressure on the workpiece. Four cast aluminium corner brackets carry the band, their internal corners are fitted with self-aligning plastic jaw faces for use on non-square work. When used with square or rectangular work the plastic jaws are best removed. A large handle with a screw thread is used to apply pressure. For use on frames 65mm to 915mm square. By removing the corner pieces entirely, the clamp can be used on oval, circular or coopered work.

	Inc.vat	Ex.vat	Code
Frame Clamp	£23.94	£19.95	910141

Bessey Band Clamp upto 7m

The Bessey band clamp and the Vario corners are the perfect pair for gentle, non-warping clamping. Traditionally some of the most difficult clamping jobs are curves, polygonal connections and closed contours. BESSEY has come up with a solution for even clamping on both sides without warping or skewing of the work piece. These two products are suitable for all those situations where gentle, non-warping, all-round clamping is needed. Equally suitable for wood and plastic as well as in metal construction. The automatic locking system that ensures even forces on both sides, which do not slacken until the clamp is released.

	Inc.vat	Ex.vat	Code
Band Clamp upto 7m	£37.94	£31.62	952090
Spare Vario Corners (pack 6)	£11.94	£9.95	952091



Veritas 4-Way Speed Clamp

The fastest adjusting frame clamp on the market. Completely knurled for good grip, the speed-clamping nuts are designed to let you make fast adjustments, yet hold securely when you tighten them. They are cross drilled to slide easily on the rods until they come up against a corner clamp; then their threads engage. To release them, you just have to back them off a turn or two and they are then free sliding again. The speed clamp includes four corners (strong, glass-filled nylon with brass inserts), four speed clamping nuts and four 1/4" UNC threaded rods that will clamp up to 585mm(23") square. To increase clamping capacity to 1,120mm(44") square or 1,650mm(65") by 585mm(23") rectangle, an extension set is included; it contains four 1/4" UNC threaded rods and four coupling nuts. The rods and coupling nuts have a black-oxide finish. Made in Canada.

	Inc.vat	Ex.vat	Code
4-Way Clamp	£34.94	£29.12	475309



Multi-Angle Band Clamp

This light duty band clamp is provided with four metres of strong nylon webbing, a screw tensioning device and four corner blocks with self-adjusting jaws enabling it to accommodate angles other than 90°. Perfect for picture framing.

	Inc.vat	Ex.vat	Code
Band Clamp	£12.95	£10.79	910142

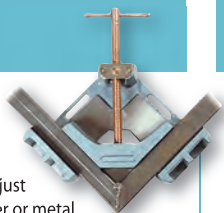
Quick Frame Clamp

Comprises eight 610mm lengths of threaded rod, and four of each corner blocks, quick nuts and coupling nuts. Once assembled (two minutes tops) the clamp is capable of handling frames up to 1,200mm square. Rectangular or square, the quick nuts allow adjustments and tightening to be done in seconds. The corner blocks ensure that the frame is clamped squarely and securely every time.

	Inc.vat	Ex.vat	Code
Frame Clamp	£14.94	£12.45	310079



Mitre Clamps



Heavy Duty Mitre Clamps

These rugged cast iron mitre clamps are just the job for heavy duty clamping of timber or metal sections. The jaws are pivoted on the end of the screw as are the screws where they pass through the body; this allows for a large degree of misalignment when clamping pieces of different thickness. They can be used for mitre or T joints and with equal or odd material thicknesses. All the clamping surfaces, including the bases, are machined at 90°. Capacity 80mm and jaw depth 35mm

	Inc.vat	Ex.vat	Code
80mm x 35mm	£49.94	£41.62	910143

Mitre Clamp

An alloy mitre clamp which allows the joint to be held firmly in position whilst either the glue dries or a pin is driven home. We won't pretend these clamps are the heaviest duty in the world, but they do the job they are designed for well, and purchasing one for each corner of a frame won't break the bank. Timber capacity is 16mm deep and 75mm wide.



	Inc.vat	Ex.vat	Code
Mitre Clamp	£6.24	£5.20	340434

Joiner's Mitre Clamp

The traditional style of mitre clamp made from cast iron with nylon-capped steel screws and accurately machined locating surfaces. Capacity is 60mm wide by 20mm deep.



	Inc.vat	Ex.vat	Code
Mitre Clamp	£10.74	£8.95	200236

G Clamps

Axminster Standard G Clamp

At some point, it is virtually guaranteed there will be insufficient cramps in the workshop to complete a job, so here we are including a range of good quality clamps to help avoid things becoming unstuck. These G cramps are drop forged from quality steel with extra webs at the stress points, strong rolled thread steel screws, live clamping pad and tommy bar with which to apply pressure. They have a relatively slim cross section allowing more cramps to be placed within a given length.

	Inc.vat	Ex.vat	Code
25 x 27mm	£1.94	£1.62	340019
50 x 30mm	£2.45	£2.04	340020
75 x 50mm	£4.14	£3.45	340022
100 x 70mm	£5.75	£4.79	340024
150 x 90mm	£9.95	£8.29	200085

Axminster Heavy Duty G Clamp

A range of extra strong, large capacity cramps for use where higher clamping pressures are to be expected. They feature drop forged bodies, larger clamping faces and a square rolled thread for extra strength.

	Inc.vat	Ex.vat	Code
100 x 55mm	£8.45	£7.04	310487
150 x 70mm	£11.24	£9.37	310488
200 x 90mm	£14.15	£11.79	310489
250 x 100mm	£16.94	£14.12	200086

G Clamps



Axminster Forged G-Clamp

G-Clamps are an essential tool in any workshop. We particularly like these examples. The forged, spring-tempered steel has immense strength. The main part of the clamp is hard chrome plated for protection against corrosion. The machined and hardened Acme thread is fast to adjust and has a high loading capacity. A tommy bar allows you to apply force without difficulty. A swivelling pad allows for clamping slightly tapered pieces. This is a heavy-duty clamp ideally suited to a wide variety of applications in woodworking, engineering and fabrication or welding. Lifetime Guarantee – these cramps are of a high standard, should they fail at any time due to a material or manufacturing defect we will replace them free of charge.

	Inc.vat	Ex.vat	Code
50mm x 50mm	£18.44	£15.37	504001
100mm x 60mm	£25.94	£21.62	504002
150mm x 75mm	£31.94	£26.62	504003

Axminster Deep Throat G Clamp

Exceptionally well made deep throat cramps. The smaller of the two has a maximum opening of 50mm with a throat depth of 95mm and the larger one has a capacity of 75mm with a 120mm throat.



	Inc.vat	Ex.vat	Code
50 x 90mm	£3.24	£2.70	340021
75 x 120mm	£5.34	£4.45	340023

Axminster Forged Deep Throat G-Clamp

Forged, simple, well made deep throat G-cramps, these are amongst the best we've found. The forging produces a clamp with great strength, which won't break if dropped on the workshop floor. The spring-tempered steel is hard chrome plated for protection against corrosion. The machined and hardened Acme thread is fast to adjust and has a high loading capacity. A swivelling pad allows for clamping slightly tapered pieces. Lifetime Guarantee – these cramps are of a high standard, should they fail at any time due to a material or manufacturing defect we will replace them free of charge.

	Inc.vat	Ex.vat	Code
75mm x 125mm	£23.94	£19.95	503998
125mm x 200mm	£36.95	£30.79	503999
150mm x 250mm	£51.44	£42.87	504000

Axminster Edging G Clamp

For cramping an edging or lipping to a board up to 60mm thick by 50mm deep. Screws on each side allow for off centre cramping. Made to the same high quality as the Axminster Standard Duty G clamp.



	Inc.vat	Ex.vat	Code
Capacity 55 x 60mm	£5.94	£4.95	340018



Bessey TK6 Table Clamp

The TK-6 Table Clamps are as useful as they come, for clamping jigs and fixtures to a bench or tabletop. The 8mm diameter, 42mm long spigot fits several Bessey clamps (K Body and KVR for example) enabling them to be fixed onto the edge of a bench. Some power tools, belt sanders for instance use an 8mm spigot clamp when inverted. Simply drill an 8mm hole in the side of any home made jig to secure it to your bench. Maximum opening is 60mm, cast alloy body with steel spigot.

	Inc.vat	Ex.vat	Code
8mm Spigot	£4.34	£3.62	702163



Axminster Spigot Clamp

The Axminster Spigot Clamp has great potential for clamping jigs, fixtures or even work pieces (with a suitable drilled hole) to a bench or tabletop. The 7mm diameter, 40mm long spigot enables all sorts of items to be fixed onto the edge of a bench, without a clamp getting in your way. Simply drill a 7mm hole in the side of whatever you wish to secure to your bench. Maximum opening is 65mm, cast alloy body with steel spigot.

	Inc.vat	Ex.vat	Code
7mm Spigot	£3.24	£2.70	951733



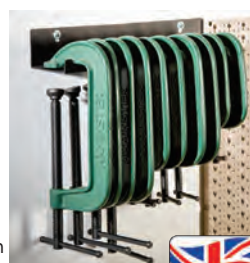
Axminster Tool Makers Clamps

These clamps are extremely useful for work holding when drilling, tapping or other machining operations. Made from hardened, ground steel with parallel adjusting screws. The ends of the jaws are bevelled to allow clamping under shoulders or in recesses. No end of uses for both metal and woodworking crafts. 4 sizes available.

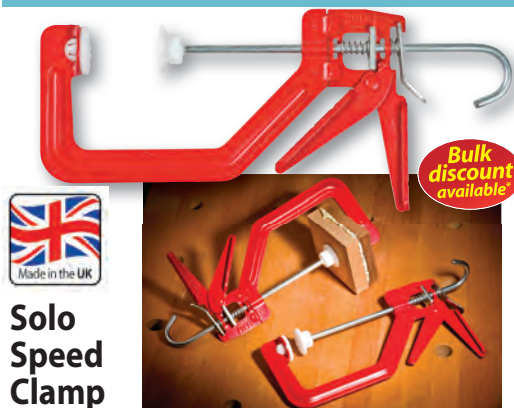
	Inc.vat	Ex.vat	Code
50mm	£3.74	£3.12	210335
63mm	£4.44	£3.70	210336
75mm	£5.24	£4.37	210337
100mm	£7.25	£6.04	210338

Axminster Wall Mounted G Clamp Rack

This rack for 10 cramps has it sorted. Your G cramps sit in place, quietly waiting for the next time you need them. The slots ensure quick and easy access to any size up to 250mm (10"). Made in 16-gauge steel with a painted finish, the rack is 420mm long by 70mm high and pre-drilled for fixing on a wall.



	Inc.vat	Ex.vat	Code
Wall Mounted G Clamp Rack	£10.94	£9.12	952968



Solo Speed Clamp

Superfast, single-handed clamping. Simply squeeze the trigger to advance the movable jaw forward. The ratchet-type mechanism produces a significant amount of pressure. With a Solo clamp, you can hold work pieces in position with one hand whilst tightening the clamp with the other. Non-marking plastic faces on the jaws prevent damage to your work. Jobs requiring large numbers of clamps take just a few minutes.

	Inc.vat	Ex.vat	Code
100mm Plastic Jaw	£5.94	£4.95	951048
150mm Plastic Jaw	£6.95	£5.79	391507



Bessey KliKlamp

Bessey describe the KliKlamp as "Light as a feather – tough as nails" and we agree. They are a mix of technical materials and design. The VIBRAFIX ratchet mechanism lets you achieve a huge 1,200N of clamping force quickly with just 2 fingers, whilst they weigh between 260g and 450g depending on the size. 80mm of throat depth.

	Inc.vat	Ex.vat	Code
200 x 80mm	£14.94	£12.45	952124
250 x 80mm	£15.44	£12.87	952125



Axminster Forged Quick Lever Clamp

These clamps combine fast action with a powerful clamping force. The ratchet mechanism gives you a greater mechanical advantage. This makes it easy to apply the full 210kg for the smallest to 350kg force for the largest. Pressing the release button instantly relieves the pressure. These are extremely versatile clamps. They are useful for many jobs, such as jigs or temporarily holding parts whilst drilling etc. The speed of application makes them.

	Inc.vat	Ex.vat	Code
120mm x 60mm	£21.95	£18.29	504004
160mm x 80mm	£23.24	£19.37	504005
200mm x 100mm	£28.44	£23.70	504006



Bessey GH All-Steel Lever Clamps

Speed, safety and strength. The original Bessey lever clamps are lightweight, easy to handle, dimensionally stable and torsion-resistant, and the best thing is that they can clamp up to 5 times faster than conventional clamps. This is because they use the natural force of the lever, meaning that with just a small amount of effort they can quickly produce large clamping pressures, up to 8,000N. This is particularly valuable in situations where many clamps have to be applied in a short time, with lower risk of loosening due to heavy vibration.

	Inc.vat	Ex.vat	Code
200 x 100mm	£39.44	£32.87	702789
250 x 120mm	£47.94	£39.95	702790
300 x 140mm	£67.94	£56.62	952112
400 x 120mm	£69.95	£58.29	952113
600 x 120mm	£84.95	£70.79	952114



Axminster Bar Clamp/Spreader

With glass fibre, reinforced jaws and a strong 20 x 6mm steel bar these clamps offer you rigid and powerful performance, producing between 130 and 150kg of clamping force. Their simple single-handed operation makes clamping so much easier as it leaves one hand free to steady the work. Operated by squeezing, giving great control. The well shaped handles have non-slip inserts and the rear handle houses a trigger that releases the clamp. A single push of a button locks or unlocks the reversible jaw to convert the clamp into a spreader. The jaw pads are tough and non-marring with enough give to grip irregularly shaped work.

	Inc.vat	Ex.vat	Code
150 x 85mm	£15.95	£13.29	210225
300 x 85mm	£17.34	£14.45	210226
600 x 85mm	£19.94	£16.62	210227



Use as a clamp or spreader

Bessey Single Handed EZS Clamp

For those of us without 3 hands, a clamp that only needs 1, leaving our spare hand free to grasp our mug of tea (or the workpiece of course). Capable of clamping or spreading with a force of up to 2,000N and simple to convert between functions due to the Intelligent Release Button meaning no tools are required. The ergonomically shaped handle and pump lever is positioned behind the rail enabling you to take a good hold of it. With all this force and strength about the soft pressure caps protect the workpiece. 80mm throat depth.

	Inc.vat	Ex.vat	Code
150 x 80mm	£18.44	£15.37	952119
300 x 80mm	£20.45	£17.04	952120
450 x 80mm	£22.44	£18.70	952121
600 x 80mm	£24.95	£20.79	952122
900 x 80mm	£28.94	£24.12	952123

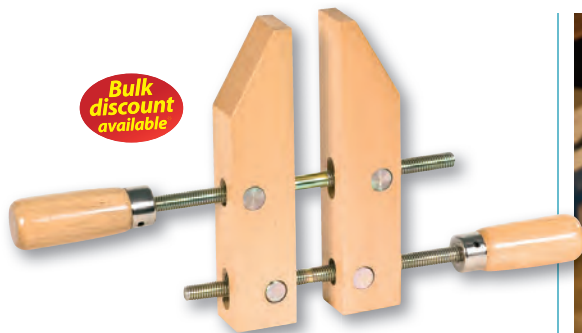


Bessey Single Handed Power Grip

Clamp and fix in place quickly and simply with just one hand. An ergonomically shaped handle with a pump lever runs that's parallel to the rail, means that balanced and safe handling is always guaranteed. A rapid move button allows you to move the sliding arm at any time, quickly and with minimum effort. Whilst removable plastic caps provide a non-marring soft touch for use with wood and finished metal surfaces. Capable of clamping force of up to 5,000N with a throat depth of 100mm.

	Inc.vat	Ex.vat	Code
300 x 100mm	£33.95	£28.29	952117
600 x 100mm	£47.94	£39.95	952118

Quick Clamps



Bulk discount available

Carpenter's Hand Screw

A traditional carpenter's clamp made to a classic design. These clamps are versatile and functional and can be used to clamp 'out of square' pieces or small items as well as regular square sided work. The clamps spread an even pressure over a very large area. The hardwood jaws can be adjusted perfectly parallel or by giving the rear screw an extra turn, the clamping pressure can be transferred onto the tips of the jaws. The screws have threads running in opposite directions so it is easy to adjust the jaw width. The jaws and handles are made from hardwood and all metal parts plated against corrosion.

	Inc.vat	Ex.vat	Code
Hand Screw 82 x 78mm	£12.24	£10.20	600696
Hand Screw 186 x 128mm	£18.95	£15.79	600698



Axminster Alloy Bar Clamp/Spreader

Bulk discount available

This clamp has a robust construction and unique design features. It is capable of applying over 300kg of force with diecast alloy jaws, a 20 x 6mm steel bar and a heavy duty mechanism. The moving jaw advances by squeezing the handle. It features a spring loaded face, slightly angled so its top touches first as the jaws close. As pressure is applied, the spring compresses to ensure even pressure distribution. The fixed jaw is reversible to convert the clamp quickly into a spreader. The jaw faces have non-marring, glue-resistant pads. The clutch operates with a simple release. The throat depth is 80mm. This is an outstanding new version of this style of clamp.

	Inc.vat	Ex.vat	Code
300 x 80mm	£20.94	£17.45	210229
600 x 80mm	£25.34	£21.12	210230



Bulk discount available

Irwin Quick Grip Mini Bar Clamp

Slightly lighter weight cousins to the Quick Grip clamps, these Mini clamps have a capacity of 150mm and a jaw depth of 60mm. A very, very useful clamp for smaller jobs.

	Inc.vat	Ex.vat	Code
150 x 60mm	£6.14	£5.12	800423



Bulk discount available

Axminster Utility F-Cramp

Cramps come and cramps go but the 'F-cramp' has proved its worth over the years. The Axminster Utility 'F-cramp' represents really good value for money. Produced in an all steel construction with wooden handles. The main bar is pre-tensioned and the cramping faces are fitted with non-marking pressure pads.

	Inc.vat	Ex.vat	Code
100 x 50mm	£6.65	£5.54	210074
200 x 50mm	£7.34	£6.12	210075



Bulk discount available

Axminster F-Cramps

The Axminster F-cramp really lets you put the pressure on. Its wooden handle is covered with a non-slip neoprene sleeve giving you significantly more grip when it comes to tightening up. These are great value, with their cast jaws and a steel bar. The bar features serrated edges to ensure zero slippage. The clamping faces are fitted with plastic protection pads to protect your work.

	Inc.vat	Ex.vat	Code
Capacity 200 x 80mm	£11.94	£9.95	990079
5 off 200 x 80mm	£53.95	£44.96	990080
Capacity 300 x 100mm	£14.94	£12.45	990070
5 off 300 x 100mm	£67.94	£56.62	990076
Capacity 400 x 80mm	£13.04	£10.87	210070
5 off 400 x 80mm	£58.94	£49.12	718195
Capacity 500 x 100mm	£16.85	£14.04	990077
5 off 500 x 100mm	£74.95	£62.46	990078
Capacity 600 x 80mm	£14.64	£12.20	210071
5 off 600 x 80mm	£65.95	£54.96	718193
Capacity 600 x 100mm	£17.45	£14.54	210080
5 off 600 x 100mm	£78.95	£65.79	718194



Bulk discount available

Axminster Forged General Duty F-Cramp

These forged cramps have strength and versatility with a design offering an excellent weight to strength ratio. The spring tempered steel bar and jaw are both hard chrome plated for protection against corrosion. The screw has a machined and hardened Acme thread, combining fast movement with a high loading capacity (270kg). A swivelling pad allows for clamping slightly tapered pieces. Both jaws feature plastic work protectors, the top protector has vee grooves to help hold round objects. The two component handle means you can comfortably apply maximum force.

	Inc.vat	Ex.vat	Code
120mm x 60mm	£12.44	£10.37	503991
200mm x 60mm	£13.44	£11.20	503992



Bulk discount available

Bessey LMU Bar Cramp

One of our favourite things is a tool that represents great value. Here is one more of them. This handy, lightweight clamp is great for general use and as a bonus the simple design can clear a lip or projection on the edge of a workpiece. The plated steel bar is 16mm wide by 5mm thick bent into a semi-circle at one end forming a jaw with a clearance of 22mm. The clamp has quick and positive adjustment. Serrations prevent the sliding jaw slipping under pressure. Both jaws feature plastic caps to protect your work (glue won't stick to them either). It has a 50mm deep throat with a maximum opening of 205mm.

	Inc.vat	Ex.vat	Code
205 x 50mm	£5.94	£4.95	211802

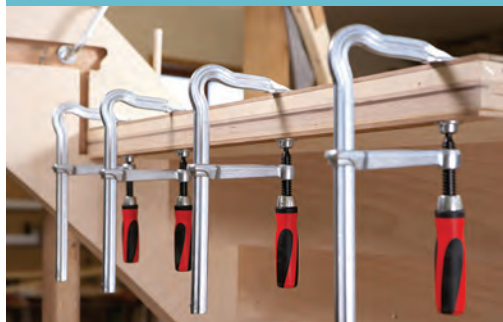


Shown with clamp fitted. (not included)

Bar Clamp Stand with Vice Jaws

This accessory adds great potential to the Rapid Assembly Clamp. It will fix the clamp into an exceptionally useful vice. It includes four clamp stands, thus allowing you to use two clamps at a time fixed to a bench top. A pair of die-cast alloy jaws replaces the non-marring jaws, instantly giving you a large capacity bench top vice. When used as a vice the two stands not in use sit on top of the clamp rail to help support the work. The Rapid Assembly clamp features adjustable pressure making it the perfect candidate to use with this accessory. The jaw pads are 90mm by 46mm and the throat 85mm.

	Inc.vat	Ex.vat	Code
Bar Clamp Stand with Vice Jaws	£12.84	£10.70	502461



Bessey GZ All Steel Screw Clamp



The rail profile means that 20% more clamping force per spindle rotation is exerted. They are capable of a clamping force of up to 5,500N. Put this together with a tempered steel fixed jaw and sliding arm and the high-quality 2-component plastic handle and you've got a light weight, durable and easy to handle screw clamp.

	Inc.vat	Ex.vat	Code
200 x 100mm	£27.74	£23.12	952105
250 x 120mm	£33.44	£27.87	952106
300 x 140mm	£42.44	£35.37	952107
400 x 120mm	£48.44	£40.37	952108
600 x 120mm	£53.94	£44.95	952109
800 x 120mm	£64.94	£54.12	952110
1,000 x 120mm	£73.44	£61.20	952111



Shown with handle turned

Bulk discount available

Axminster Forged F-Cramp with Swivel Handle

These heavy-duty forged cramps feature handles that swivel through 90° giving you more leverage when tightening. The cramping pressure ranges from 300kg for the smallest to 750kg for the largest clamp. The spring tempered steel bar and jaw are both hard chrome plated for protection against corrosion. The large diameter screw has a machined and hardened Acme thread, combining fast movement with a high loading capacity. A swivelling pad allows for clamping slightly tapered pieces. Both jaws feature plastic work protectors, the top protector has vee grooves to help hold round objects. The two component handle swivels to apply maximum force. Cramps with greater capacity have larger handles.

	Inc.vat	Ex.vat	Code
160mm x 80mm	£16.44	£13.70	503993
300mm x 80mm	£18.44	£15.37	503994
250mm x 120mm	£22.94	£19.12	503995
400mm x 120mm	£28.94	£24.12	503996



Cramps not included

Axminster Wall Mounted Bar Cramp Rack



What are you going to do with that heap of cramps in the corner? This rack will deal with your storage problem in the best possible way. It will safely store your bar cramps, F cramps, sash cramps or similar items. The storage slots are 12mm wide and the capacity is up to 12 cramps or 25kg. Made in thick 16-gauge steel with a painted finish they are unlikely to bend under load or rust over time. Each rack is 590mm long and pre-drilled for fixing on a wall.

	Inc.vat	Ex.vat	Code
Rack - 590mm	£10.94	£9.12	950026



Bessey UniKlamps

The UniKlamp is designed for those clamping tasks that don't require the weight, capacity or potential force of full-scale heavy duty clamps. It works on the same principle as other parallel jaw clamps. A polyamide glue resistant casing surrounds the jaws. The jaws spread the load, will not mark the workpiece and stay parallel across the full width of the clamping area. The heads can be removed from the bar and reversed so that the clamp will act as a spreader. The hanging loop serves as a stand allowing the UniKlamp to stand horizontally on the bench. The clamps exert plenty of force without being too heavy to handle. These are excellent, easy handling bar clamps for light and medium applications.

	Inc.vat	Ex.vat	Code
300 x 80mm	£17.94	£14.95	395442
600 x 80mm	£18.44	£15.37	395333



Bessey Vario K-Body REVO Cramps

The Vario K-Body REVO Cramp offers the unique option of moving either of the clamping heads along the bar. What is traditionally the fixed head is movable with a simple push button release. This feature allows you to centralise your workpiece in relation to the bar for a balanced weight distribution. Similar in all other respects to the standard REVO clamp. Bessey TK 6 cramps are available to clamp the K-body Revo to the edge of a bench and an extruded aluminium joiner can turn two shorter REVO cramps into a single extra long unit.

	Inc.vat	Ex.vat	Code
1,000mm	£67.94	£56.62	950957
1,500mm	£74.94	£62.45	950958



Bessey K-Body REVO Cramps

The K-Body REVO Cramp consists of a bar of cold drawn steel, profiled to minimise flexing and bending, hardened rollers in the moving head maintain a constant 90° angle under load. The clamp heads are encased in a non-marring glue resistant plastic sheath and the large clamping surface avoids damage to delicate surfaces. These cramps are easy to adjust, the K-Body REVO exerts 7,000N of clamping force, more than any other similar clamp on the market today, and a 20% increase on the previous Bessey K-Body clamp. At the far end of the bar a removable stop also acts as a support, keeping the bar level and stable, ready to be loaded on the assembly bench. Each REVO is supplied with two clip-on polyamide spacers, used to prevent direct contact between the workpiece and clamp rail for protection when the full clamping depth of 95mm is used. The sliding head is reversible, turning the clamp into a spreader.

	Inc.vat	Ex.vat	Code
300 x 95mm	£35.94	£29.95	210558
600 x 95mm	£40.94	£34.12	210559
800 x 95mm	£46.94	£39.12	210560
1,000 x 95mm	£51.95	£43.29	210561
1,250 x 95mm	£58.94	£49.12	210562
1,500 x 95mm	£63.95	£53.29	210563
2,000 x 95mm	£85.94	£71.62	952115
2,500 x 95mm	£102.95	£85.79	952116

Bessey Tilting Adaptor Jaws for K-Body Cramps



The optional tilting K Body clamp adaptors easily slide onto the clamping jaws enabling clamping of out of square items. These tilting adaptors self-adjust to the workpiece. The adaptors angle to plus or minus 15 degrees.

	Inc.vat	Ex.vat	Code
Tilting Adaptor Jaws	£10.44	£8.70	210564



Bessey KBX K-Body Cramp Joiner

This simple but clever clamp connector made from a heavy-duty aluminium extrusion. The inner profile matches that of the K Body clamp bar. 10mm diameter bolts ensure a secure connection. The two red adaptors supplied are for use with KRV and KR clamps, not required for joining series K.

	Inc.vat	Ex.vat	Code
Clamp Joiner	£25.44	£21.20	950959



Bessey TG Screw Cramps

The rail is a hollow ground profile made from cold drawn steel in Bessey's own mill and optimised for high static stress levels. Serrated on six faces to engage securely with the non-slip mechanism of the sliding arm. Both the fixed and sliding arms are made of high-grade malleable cast iron, which is eminently suitable for the purpose and its rigidity. Clamps supplied complete with removable plastic protection caps to help protect your work. N.B. 600mm length and above do not come supplied with protection caps.

	Inc.vat	Ex.vat	Code
200 x 100mm	£22.94	£19.12	308708
300 x 140mm	£30.95	£25.79	308868
400 x 175mm	£34.94	£29.12	309223



Bessey KT Edge Clamps

To extend the clamping ability of your screw clamp these edge clamps will form an important part of your kit. Located on the bar of your F/Screw clamp between the open jaws they will securely hold lipping or edge repairs in place while the glue cures. Supplied as either double or single screw assemblies according to the amount and area you need to apply.

	Inc.vat	Ex.vat	Code
Single Clamp	£11.45	£9.54	304556
Double Clamp	£18.95	£15.79	304587

F Cramps



Bessey Deep Throat Cramp

These Bessey's deep-throated screw cramps give you enhanced reach and more robust arms. Similar in other respects to their TG Screw Clamp.

	Inc.vat	Ex.vat	Code
400 x 300mm	£76.94	£64.12	100725

Cramp Heads



Bulk discount available

Axminster Deluxe Cramp Head Set

Separate cramp heads, rather than complete sash cramps, are the answer to many a cramping problem. They offer complete flexibility in the choice of both length and material for the bar, with timber being used for light weight and ease of working and metal box section for the ultimate in rigidity. These deluxe cramp heads are strongly made from cast iron and steel. When force is applied to the jaw faces the stocks try to slide back against the pins and are driven down against the bar with equal force, maintaining the jaws at 90° to the bar. The maximum bar width is 25mm and the depth is unlimited (within reason!).

	Inc.vat	Ex.vat	Code
Cramp Head Set	£12.74	£10.62	100176

Cam Clamps



Bulk discount available

Klemmsia Cam Clamps

Lightweight with hardwood heads, these have the fastest action of all. Used by violin makers where many clamps are needed but total weight would be a problem. The cork faced jaws can exert a considerable amount of pressure without marking the work. Also available is an edging clamp to fit to any standard Klemmsia. This latter item is very useful when jig making as it can be simply screwed to a base board and used to hold the workpiece in position.

	Inc.vat	Ex.vat	Code
200 x 110mm	£9.24	£7.70	510430
200 x 150mm	£13.44	£11.20	510431
200 x 200mm	£14.45	£12.04	510432
300 x 110mm	£9.95	£8.29	510435
400 x 110mm	£10.74	£8.95	510440
600 x 110mm	£12.44	£10.37	510443
Edging Clamp	£5.45	£4.54	510427

Assembly Clamps



Trend Door Clamp

A ratchet style door clamp that will stop the door moving when drilling and fitting locks or any other door furniture. Simply slide the bracket under the door and squeeze the ratchet clamp. Padded to prevent door or floor damage, it is suitable for doors up to 55mm thick.

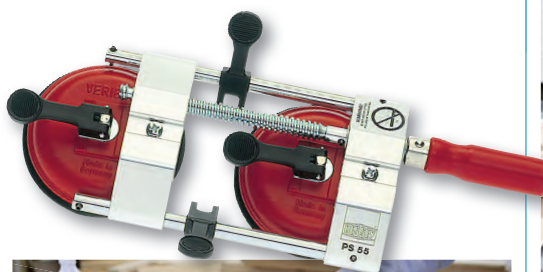
Clamp	Inc.vat	Ex.vat	Code
	£21.95	£18.29	701786



Pair of Right-Angle Assembly Clamps

Dry assembly of a carcass or even trying to hold two panels together to place a fixing screw often leads to much cussing and the desire for a third or even fourth hand. Right-Angle assembly clamps are that third and fourth hand, made from glass fibre reinforced nylon they have a single handed ratchet mechanism allowing them to be squeezed together across a corner, providing a firm hold. The clamps hold boards or panels from 10mm to 20mm thick at 90°, with a variation of up to 6mm in thickness between the panels. Use for test fitting, holding whilst applying cramps or placing a fixing. Overall size 100 x 75 x 40mm, sold in pairs.

Assembly Clamps (2)	Inc.vat	Ex.vat	Code
	£7.44	£6.20	202403



Bessey PS55 Professional Seaming Tool

The PS55 uses two vacuum cups, enabling the user to clamp across a butt joint in a solid surface, most commonly kitchen worktops made from Corian, granite, marble, laminate etc. The lever operated vacuum cups are made from aluminium alloy with a high quality rubber diaphragm and will attach to most non-porous smooth surfaces, eliminating the need for glue blocks. The PS55 features two levelling toggles to ensure as smooth as possible transition across the joint. A hardened and galvanised steel spindle smoothly draws seams together with just the right pressure for a seamless result. Clamp opens from 10 to 55mm.

	Inc.vat	Ex.vat	Code
Seaming Tool	£189.95	£158.29	210919



trend

Trend Door Stand



A very simple but clever stand to hold a door or similar on its edge while planing or fitting door locks etc. An adjustable clamp securely holds doors etc from 32mm - 55mm thick whilst it is being worked on and will also allow it to be pivoted into an upright position for fitting. With a non-scratch base and a maximum door weight of 50kg.

	Inc.vat	Ex.vat	Code
Door Stand	£44.94	£37.45	701787



BESSEY

Bessey PS130 Vacuum Seaming Tool

The PS130 features two manual vacuum pumps for maximum suction power. These enable the positioning and firm clamping across a butt joint of smooth surfaced, large heavier sheets. It will clamp materials such as Corian, artificial stone, granite, glass, ceramic, sheet metal or plastic. The pumps generate the maximum vacuum with only a few movements, giving a top clamping force of up to 1,200N. The status of the vacuum is available to see at any time via a marking ring on the pump tappet. A simple release button allows the rapid removal of the clamp. The PS130 has three Bessey all-steel rails running in anodised aluminium guides which ensures the suction discs are always on precisely the same level even under high clamping pressure. A hardened and galvanised steel spindle smoothly draws the cups together for a seamless result. Clamp opens from 5mm to 130mm.

	Inc.vat	Ex.vat	Code
PS130 Vacuum Seaming Tool	£399.95	£333.29	952905

Bulk discount available



Axminster Aluminium Sash Cramps

For those who just have some light clamping to do and do not want to invest in steel and cast iron sash cramps these low cost aluminium clamps could well be the answer. Despite the fact that the bars are aluminium extrusions they are remarkably rigid and will not deflect under normal clamping loads. We say normal because we all know that clamps should not be used as a means of correcting poor joint preparation, just for holding the pieces together while the glue dries, don't we? The movable jaw slides along the bar and locks into position by means of a spring loaded latch which engages in a series of notches in the bar making the clamps very easy to position on the work. Sold individually and available in two clamping capacities, 815mm and 1120mm.

	Inc.vat	Ex.vat	Code
815mm	£10.94	£9.12	400078
1,120mm	£12.95	£10.79	400079

Bulk discount available

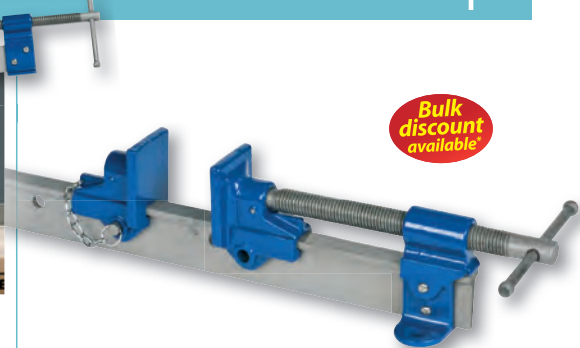


Axminster Sash Cramps

These Sash Bar Cramps are especially useful for clamping large section workpieces during gluing-up in joinery, carpentry and boat building work. The bars are made from drawn steel with a section of 32 x 6mm (1.1/4" x 1/4") and the cast iron heads and slides provide rigidity and strength even under heavier loading. The clamp faces are 50mm deep by 27mm wide. The head has a flat base, allowing the clamp to stand upright without support. The main screw has a twin start thread for rapid adjustment. Available singly or as a pack of 6.

	Inc.vat	Ex.vat	Code
760mm (30")	£16.44	£13.70	950257
1,060mm (42")	£18.74	£15.62	950258
1,370mm (54")	£20.45	£17.04	950259
6 off 760mm (30")	£89.95	£74.96	718707
6 off 1,060mm (42")	£99.95	£83.29	718708
6 off 1,370mm (54")	£109.94	£91.62	718709

Bulk discount available



Axminster T-Bar Cramps

From the same quality manufacturer as the Axminster standard sash clamp come these really heavy duty cramps. Made from strong T steel section bar, 20 x 45mm in overall section, with cast iron head and slide, they are capable of applying very high clamping pressures. Other features are the twin start screw thread and 125mm long tommy bar for fast adjustment, powder coated finish and countersunk holes in the base of the head for fixing to the bench if you wish. The clamp faces are 50 x 50mm. Available singly or as a pack of 6.

	Inc.vat	Ex.vat	Code
T-Bar Cramp 1,370mm (54")	£32.45	£27.04	950260
T-Bar Cramp 1,980mm (78")	£38.94	£32.45	950261
6 off T-Bar Cramp 1,370mm (54")	£174.95	£145.79	718710
6 off T-Bar Cramp 1,980mm (78")	£209.95	£174.96	718711

Spring Clamps



Pack of 5 Axminster Mini Spring Clamps

Small and simple, these mini versions of the handy spring clamp have so many uses they just can't help being great value for money. They share all the same features as their larger cousins, including pivoting jaw pads for clamping non-parallel items. The jaws open to a maximum of 25mm and the throat depth is 19mm. These clamps have many applications, from model making and holding small work pieces whilst glue dries, to simply clipping plans up or paperwork together. Totally, reliable, non-rusting and above all inexpensive, you'll never regret buying a couple of packs of these.

	Inc.vat	Ex.vat	Code
Pack of 5 Clamps	£3.14	£2.62	950231



Axminster Power Hand Clamp

- Simple, versatile, reliable and effective
- Box joint design for strength and alignment
- Positive non-slip clamping
- Jaw pads with cross-vee for round or irregular pieces
- Clamping pressure 35 to 40kgs

	Inc.vat	Ex.vat	Code
58mm	£5.75	£4.79	210209
100mm	£7.94	£6.62	210210

Box of 10 Assorted Axminster Spring Clamps

Box of 10 spring clamps, containing:

- 4 x 35mm
- 4 x 60mm
- 2 x 80mm

	Inc.vat	Ex.vat	Code
Clamps - Pack 10	£12.95	£10.79	110036

Bulk discount available

Axminster Spring Clamps

- Simple and quick to use with a myriad of applications
- ABS mouldings with heavy duty steel springs
- Non-marking plastic jaws
- Available in a variety of capacities

	Inc.vat	Ex.vat	Code
75mm Capacity 25 x 25mm	£0.95	£0.79	410294
100mm Capacity 38 x 38mm	£1.44	£1.20	410295
150mm Capacity 52 x 50mm	£1.94	£1.62	410296
230mm Capacity 80 x 80mm	£2.54	£2.12	410297

Bulk discount available

Axminster Heavy Duty Spring Clamps

- Spring action with strong grip
- Fast, firm and relatively inexpensive
- All steel bodies plated against corrosion
- Heavy-duty tempered steel spring for maximum strength
- Plastic-vinyl tips and handles to protect the work and hands

	Inc.vat	Ex.vat	Code
H/D Spring Clamp 25mm	£1.94	£1.62	951744
H/D Spring Clamp 50mm	£3.05	£2.54	951743
H/D Spring Clamp 75mm	£4.64	£3.87	951742



Bessey Vario Clippix Spring Clamp

Take the simple spring clamp, and make it even more useful by making the capacity variable anywhere between 0 and 100mm. That's what Bessey have achieved with the Clippix Spring Clamp. The addition of a rapid adjustment sliding jaw gives the user all the advantages of a traditional spring clamp with the bonus of far wider use due to increased capability. Sold individually.

	Inc.vat	Ex.vat	Code
Capacity 100 x 55mm	£6.95	£5.79	200674

Toggle Clamps

Toggle Clamp Type A

When the clamp is locked, the handle is in the vertical position.



	Inc.vat	Ex.vat	Code
20mm (Holds 50kg)	£5.24	£4.37	500314
35mm (Holds 100kg)	£5.54	£4.62	500315
45mm (Holds 180kg)	£6.84	£5.70	500316
62mm (Holds 250kg)	£7.94	£6.62	378001
75mm (Holds 360kg)	£9.95	£8.29	500317

Bessey Self Adjusting Toggle Clamp

The BESSEY self-adjusting toggle clamp automatically adjusts to the height of your workpiece. The jaw easily accommodates heights of 0 - 45mm or 0 - 65mm dependent on which model you choose, while the clamping force remains unchanged. This means the fiddly manual adjustment of the pressure screw is a thing of the past. A set screw, on the cantilevered joint, adjusts the clamping force to your particular needs, up to 2,500N. The injection moulded handle is broad which makes setting the clamp a comfortable operation. This makes them perfectly suited for use in small-scale production situations.



	Inc.vat	Ex.vat	Code
Self adjusting Toggle Clamp 0 to 40mm	£19.74	£16.45	502275
Self adjusting Toggle Clamp - 0 to 60mm	£19.94	£16.62	502276

Toggle Clamp Type B

When the clamp is locked, the handle is in the horizontal position.



	Inc.vat	Ex.vat	Code
15-35mm (Holds 50kg)	£5.45	£4.54	810468
15-50mm (Holds 90kg)	£5.54	£4.62	500319
30-65mm (Holds 227kg)	£5.94	£4.95	500321
35-95mm (Holds 340kg)	£8.24	£6.87	500320

Bessey Self Adjusting Push Pull Toggle Clamp

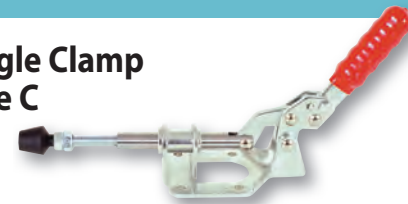
This Bessey self-adjusting toggle clamp allows movement of the handle to be converted into an axial movement of the push/pull rod. It has automatic distance adjustment up to 16mm with unchanged clamping force without manual changes. A set screw, on the cantilevered joint, adjusts the clamping force to your particular needs: 10mm up to 1,100N and 16mm up to 2,500N. The injection moulded handle is broad which makes setting the clamp a comfortable operation.



	Inc.vat	Ex.vat	Code
Push/Pull 0-10mm Length 181mm	£20.94	£17.45	503893
Push/Pull, 0-16mm Length 225mm	£21.95	£18.29	503894

Toggle Clamp Type C

A simple piston action with 20mm travel operated with handle in the horizontal position.



	Inc.vat	Ex.vat	Code
20mm Travel	£9.74	£8.12	810469

Bessey Self Adjusting Hold Down Toggle Clamp Angled Base

This Bessey self-adjusting toggle clamp automatically adjusts to the height of your workpiece within a 20mm range, whilst the clamping force remains unchanged. This means the fiddly manual adjustment of the pressure screw is a thing of the past. A set screw, on the cantilevered joint, adjusts the clamping force to your particular needs, up to 1,100N. The clamp is mounted with the angled baseplate. The injection moulded handle is broad which makes setting the clamp a comfortable operation. As a result they are perfectly suited for use in small-scale production situations. In clamped position the handle is horizontal.



	Inc.vat	Ex.vat	Code
Toggle Clamp Angled Base	£19.94	£16.62	503892

Pipe Clamps

Axminster Heavy Duty Pipe Clamp Set

This is the clamp of choice in the States for joinery (cabinetry) and general work clamping particularly where flexibility of length is needed. 3/4" bore iron pipe, threaded at one end to 3/4" BSP to hold the screw jaw needs to be purchased separately. Quick, adaptable and easy to use you can see why our friends across the pond love them. If you need a supply of suitable pipe we offer a pack of passivated steel pipe ready threaded.

	Inc.vat	Ex.vat	Code
Clamp Set	£9.95	£8.29	100121
Pipe Pack 900mm (Pkt 2)	£20.94	£17.45	210077
Pipe Pack 1,200mm (Pkt 2)	£24.44	£20.37	210078

Uses 3/4" Bore Pipe

Pony No 50 Pipe Clamp

Pony pipe clamps are extremely popular in their native USA, buying the head and tail alone saves some cost, but mainly gives the user much greater flexibility, the same set can be used on many different lengths of pipe. These clamps fit onto standard 3/4" bore black iron pipe (nominal 1.05" O/D) with a 3/4" BSP thread, which can be purchased from steel or plumbing merchants. However, recognising the possibility that not every customer lives next door to a plumber's yard, we also offer specially plated pipe for woodworkers. The pipes have an anti-corrosion passivated finish and are threaded both ends. (Little tip - lightly grease the threads before putting the clamp together, it makes it easier to change later.)

	Inc.vat	Ex.vat	Code
No 50	£26.45	£22.04	398213
Pipe Pack 900mm (Pkt 2)	£20.94	£17.45	210077
Pipe Pack 1,200mm (Pkt 2)	£24.44	£20.37	210078

Plated Pipe Pack for 3/4" Pipe Clamps

We have had the outside of these pipes specially plated so they're perfect for use as a woodworking tool. These 3/4" bore pipe packs consist of either two 900mm or two 1,200mm lengths of steel pipe. Each piece threaded at one end ready to take a pipe clamp head. This pack is suitable for Axminster or Pony Clamps (No 56 or No 50) or other 3/4" pipe clamps.

	Inc.vat	Ex.vat	Code
Pipe Pack 900mm (Pkt 2)	£20.94	£17.45	210077
Pipe Pack 1,200mm (Pkt 2)	£24.44	£20.37	210078

Panel Clamps

York Panel Clamp

A simple clamp set which can be located in holes either in a bench top or in separate timber beams to provide a means of assembling multi-board panels. A second timber bar can be positioned on the opposite pins of the clamping blocks to stiffen up the whole assembly. The clamps are usually used in pairs for shorter timber lengths and three, or even more, when clamping longer lengths. The removable handle keeps the work area clear once the clamps have been tightened.

	Inc.vat	Ex.vat	Code
Panel Clamp Set	£14.94	£12.45	500008



veritas®

Veritas Panel Clamp

Bowed panels can be a thing of the past. This Veritas® product is the most effective panel clamp available. It is easy to use, tightens by hand, and is stackable for production work. Best of all, you can make double clamp bars of any length to suit your own needs. The specially serrated posts grip the bars, keeping a panel flat under any pressure load without allowing the bars to lift. Bars can be made by drilling 19mm diameter holes in straight stock. 2 x 2s are fine, but 2 x 4s let you stack panels, since there is room for the top of one post and the bottom of another in the same hole. Adjustable O-rings on the posts let you clamp anything from 16mm to 50mm thick without any shimming; the clamp pads can be set dead center on the stock. The secret to the system is the balanced tension exerted on the bars. The greater the pressure, the more rigid the bars become. The screw has 125mm of travel. The panel clamp set, with one head and one tail, does not include the wood. Made in Canada.



	Inc.vat	Ex.vat	Code
Panel Clamp	£45.95	£38.29	475209



Axminster Four Way Clamping System

These clamps provide a four way pressure action, not only clamping the work together but pulling the panels up straight as well. This avoids any bowing or alignment problems, as the greater pressure that is applied with the clamps, the greater the side action becomes. Supplied as a kit complete with heavy duty screws, all that is needed are two good strong pieces of prepared timber (maximum width 43mm) for each clamp set. Additional clamping plates (the bits with the notches on) are available in pairs as optional accessories for making up dual-length clamps. Please note that each clamp set produces one complete clamp as shown in the picture (timber not included).

	Inc.vat	Ex.vat	Code
Four Way Clamp	£28.94	£24.12	500210
Short Plates (2)	£3.65	£3.04	500212
Long Plates (2)	£5.94	£4.95	500211

Plano Professional Glue Press Clamp



Two age old problems associated with gluing up panels are the amount of space required when using traditional sash cramps and the tendency of the panel to distort under the weight of the cramps. With the aid of some very clever design work the Plano Panel Clamping system has managed to eliminate both of these problems. Because the press is set vertically along a wall with a guide rail to hold the clamps in position, the whole assembly takes up less space and the weight of the clamps is no longer a problem. An added convenience of the vertical mounting is that the boards can be loaded one at a time onto the adjustable lower holder and carefully positioned prior to clamping. When full, the upper free locking device is fastened and the handwheel tightened, not only applying pressure vertically, but also forcing the two sides of the clamp together to produce lateral pressure. The result is a much stronger joint with all the timber exactly centred. The maximum clamping height available is 1,250mm and maximum clamping width is 120mm. The length is limited only by the length of wall space available, each guide rail being 1 metre long and easily linked together. The number of press units required will vary depending upon the type and size of timber used. Made of anodised aluminium and galvanised steel.

	Inc.vat	Ex.vat	Code
Glue Press Clamp 1,100mm	£104.94	£87.45	212482
Glue Press Clamp 1,250mm	£114.95	£95.79	212483
Glue Press Wall Rail 1,000mm	£13.44	£11.20	212481
Rail and Two Clamps 1,100mm	£199.94	£166.62	718425
Rail and Three Clamps 1,100mm	£295.94	£246.62	718426
Rail and Two Clamps 1,250mm	£219.95	£183.29	718427
Rail and Three Clamps 1,250mm	£319.94	£266.62	718428



Rail fitted with Universal Base and saw (not included)

Side-by-side Adaptors



ProGrip Guide Clamp

ProGrip guide clamps offer a versatile and secure work holding/clamping method and also form the basis of a power tool guide system for routers, circular saws etc. They are available in three lengths, based on an aluminium extrusion. All the clamps incorporate a scale for setting lengths and stop positions and T-slots for attaching an assortment of accessories forming an exceptionally versatile system. The positive clamping mechanism has three progressive clamping pressures, allowing for final positioning before securely locking.

Accessories available for the ProGrip clamps are -

- Back to back adaptors** secure two clamps back to back so one clamps to the bench whilst the other holds a workpiece.
- Featherboard** for use with fences and guides.
- Adjustable backstop** for setting the position of the clamp guides relative to the edge of a bench or worktable.
- Jaw blocks** fit over the existing jaw and widen the grip area,
- Universal base** for your router or portable circular saw.
- 450mm fence** will attach to the guide clamp and replace an existing fence.
- 90 Degree Head** quickly turns any of your ProGrip guide clamps into an oversized t-square. This 175 x 12mm unit slides directly over the top of the clamp head and fastens securely with the two supplied screws. Attaching the 90° head to your guide clamp quickly aligns it to the work enabling fast accurate cuts.
- ProGrip Side by Side Adaptors** These adaptors enable you to link two ProGrip clamps side by side one facing up and one down. This can be very useful for securing one clamp to a bench or table top and the other one can accept the work that you wish to clamp. Six adaptors are included in the pack so that three pairs of clamps can be linked securely together. Any of the ProGrip clamp sizes can be linked together with these adaptors allowing you to effectively increase the size of your work surface by allowing the face up clamp to extend over the edge of your bench top.

	Inc.vat	Ex.vat	Code
Clamp Guide 610mm	£22.74	£18.95	010018
Clamp Guide 915mm	£27.44	£22.87	010019
Clamp Guide 1,270mm	£33.44	£27.87	010020
Back to Back Adaptors (Pkt 8)	£12.95	£10.79	010021
Adjustable Back Stop	£19.44	£16.20	200203
Featherboard	£12.24	£10.20	010022
Jaw Blocks (Pair)	£7.94	£6.62	600854
Universal Base	£19.94	£16.62	210007
Aluminium Fence 450mm	£23.45	£19.54	210016
90° Head	£6.65	£5.54	950113
Side by Side Adaptors	£16.25	£13.54	950112



Bandsaw Fence



Back to Back adaptor



Featherboard



Length Stop



Adjustable back stop



90° Head



Jaw Blocks



Progressive clamp pressure for accurate positioning

Guide Clamps



Guide Clamps

Very useful dual purpose clamp and guide rails. Used as a guide rail, they can be clamped across the width of a board to provide a firm straight edge to guide a jigsaw, router or circular saw and as a clamp they can be used to provide light pressure when gluing up multi-board panels. Two clamps bolted back-to-back will grip both the bench and the work at the same time, leaving both hands free to work with the tools. A pair of nuts and bolts are supplied with the clamp for this purpose.

	Inc.vat	Ex.vat	Code
610mm(24")	£14.45	£12.04	340950
610mm(24") x 2	£27.44	£22.87	340951
915mm(36")	£17.45	£14.54	340952
915mm(36") x 2	£32.95	£27.46	340953
1,270mm(50")	£19.44	£16.20	340954
1,270mm(50") x 2	£35.95	£29.96	340955



United Clamp Cutting Guide

The 45mm wide anodised aluminium channel forms a rigid straight edge with a full length steel tension rod and a measuring scale. The jaws have protective pads. The large handle is easy to operate, with a 3 position cam lock, at the other is the movable, self-locking jaw. The clamp has a hanging hole for storage. Available in two sizes giving clamping capacities of 635mm (25") or 1270mm (50").

	Inc.vat	Ex.vat	Code
635mm	£13.94	£11.62	210165
1,270mm	£19.94	£16.62	210166



United Heavy Duty Clamp Cutting Guide

This extra heavy duty clamp/cutting guide is available in two lengths: 1,270mm(50") or a massive 2,463mm(97"). The extruded anodised aluminium body is a full 95mm wide to provide the extra rigidity required when spanning longer lengths. It is dual-purpose providing a straight edge for a saw or router etc. or clamping pressure when gluing up wide pieces. Connecting the fixed and sliding jaw is a full length steel rod. A large easily operated handle, with a three-position cam lock mechanism operates the clamp. A full length measuring scale runs along one side.

	Inc.vat	Ex.vat	Code
1,270mm(50")	£28.94	£24.12	210167
2,463mm(97")	£48.95	£40.79	210168

Strap Clamps

Strap Clamp 5m x 25mm

A well made strap clamp with 5m of 25mm wide pre-stretched nylon webbing and a chromium passivated heavy duty quick release ratchet. Used in either the workshop for clamping workpieces or in the timber yard for lashing another load of wood to the roof rack.

	Inc.vat	Ex.vat	Code
5m x 25mm	£6.14	£5.12	600085

Ratchet Strap Clamp 25mm

A 5m long nylon web strap 25mm wide, fitted with a ratchet operated tensioner, supplied with a set of four corner blocks. Use for clamping or as a tie-down. Extra sets of corner blocks are available if clamping an item with more than four corners.

	Inc.vat	Ex.vat	Code
Clamp 5m x 25mm	£5.45	£4.54	200078
Corners for Ratchet Clamp (4)	£2.24	£1.87	200079



Universal Corners for Strap Clamps

Strap clamps are great for clamping up odd shaped frames; however, getting the corners aligned properly can be a challenge. Most strap clamps are supplied with corners intended for clamping 90° joints. These variable angle corners will clamp joints from 30° to almost 180°. The pivoting pads interlock so that the tip of the joint will always be properly aligned. Integral tabs clip onto 25mm webbing so the corners stay in place when tightening or repositioning. Made from strong glassfibre reinforced nylon, these corners will easily withstand the forces applied and provide protection to the workpiece and the web. Sold in packages of four.

	Inc.vat	Ex.vat	Code
Clamps (Pkt 4)	£7.74	£6.45	202404



Ratchet Strap Clamp 32mm

For really heavy clamping jobs or lashing down a load. 5m of 32mm wide nylon webbing fitted with a heavy duty ratchet mechanism.

	Inc.vat	Ex.vat	Code
5m x 32mm	£8.94	£7.45	200081

Heavy Duty Ratchet Strap Clamp 50mm

50mm(2") wide by 6m(20') long polypropylene webbing with one end securely double stitched to a ratchet mechanism. Quickly and easily tightened and simple to release; also sometimes referred to as an endless strap clamp, either because there is nothing fixed to the end opposite the ratchet, or just because it has endless uses.

	Inc.vat	Ex.vat	Code
6m x 50mm	£13.14	£10.95	700289

Axminster Cable Ties

These strong cable ties have a host of uses in the home, garden and workshop. Available in lengths of 120mm. **Packs 1,000**

	Inc.vat	Ex.vat	Code
120mm long	£9.95	£8.29	210131



Timber not included

Lamello Clamping Set

A high quality, fast acting clamping system with protective corners that remove any potential to damage the work in any way. Each corner piece is made of rounded section aluminium extrusion (60mm wide) which acts to spread the load. Onto each extrusion is fitted an elevating corner piece that allows the strap to be passed around the corners without getting in the way. Tension is applied with a clamping bar that tucks in under the strap once full tension has been attained. The kit is supplied with 2 x 8m long tension straps, 4 x 600mm extrusions and a pair of tension hooks.

	Inc.vat	Ex.vat	Code
Clamping Set	£219.95	£183.29	175020



Handi-Wrap

A convenient way to secure and bundle together almost anything! This very strong Supplied with two rolls of film each measuring 100mm wide by 150 metres long, complete with an application handle for quick and easy wrapping.

	Inc.vat	Ex.vat	Code
Handi-Wrap Kit	£4.45	£3.71	719901
Pack of 4 Refills	£5.95	£4.96	719876



Vaughan Flooring Clamp

A flooring clamp that can be used on floorboards, tongue and groove or woodblock flooring. The mechanical advantage gained through the linkage is quite amazing and allows the boards to be pushed into place with the minimum of effort. Made of steel with a painted finish and soft grip handle.

	Inc.vat	Ex.vat	Code
Flooring Clamp	£43.44	£36.20	390015



Flooring Edge Cramp

This handy little clamp is an invaluable aid for the installation of wooden strip flooring. It is positioned on the board with the lip over the edge and the clamp screw is tightened up against the wall to position the edge boards. There is a plastic end on the screw to prevent marking the wall.

	Inc.vat	Ex.vat	Code
Edge Clamp	£15.95	£13.29	410476



Floorboard Clamp

This is a useful strap clamp for forcing floorboards together prior to fixing. The two plates are positioned over the edges of the boards, the strap is positioned around the spindle and the ratchet is tightened to apply the necessary clamping force. The working range is from 0.3 to 4.0 metres.

	Inc.vat	Ex.vat	Code
Clamp	£9.95	£8.29	410489



Bessey Ratchet Flooring Clamp

Parquet, laminated or panel flooring is stylish and fashionable. Bessey has developed a range of specialist clamping tools that make the laying of these floor coverings easier and more efficient. This ratchet flooring clamp has a strong polyester strap able to withstand forces of upto 5000N. With a capacity of 4000mm.

	Inc.vat	Ex.vat	Code
Ratchet Flooring Clamp	£28.94	£24.12	952098



Bessey Flooring Spacer

- Lateral support when gluing solid wood floors
- Lateral clamping for tongue & groove floors
- Capacity of 30mm
- Jaw width of 130mm

	Inc.vat	Ex.vat	Code
Flooring Spacer	£26.94	£22.45	952097



Bessey AV2 Floor Spacers (Pack of 4)

When laying laminate flooring keeping a consistent and correct spacing to the wall is critical. The use of wedges and blocks is imprecise. The BESSEY AV2 spacer is small, practical and simple. Inserted between the wall and the first row of flooring, the distance to the wall setting is simply a turn of the red dial. The AV2 compensates for any irregularities in the wall between 5 to 20mm. A millimetre scale shows the exact spacing. Manufactured from impact resistant, break resistant polyamide, the AV2 is light and tough. Each one measures 90 x 60 x 12mm, supplied in packs of four.



	Inc.vat	Ex.vat	Code
AV2 Floor Spacers (Pkt 4)	£10.74	£8.95	502366



Axminster's Windsor Chair Course

5 Days



This action packed five day course will provide students with the relevant introductory skills to make this traditional English chair. Each student will make their own chair out of seasoned materials, thus reducing the wood drying problems of wood warping once it is taken home to a heated environment. During the five days, students will cover a whole range of woodworking skills, and so it is a very practical course, covering skills from wood selection, shaping and turning of the legs, cutting and shaping of the seat, setting up and steam bending the bows. All these components will then come together to be assembled into a classic heirloom of a completed Windsor chair. As well as the range of skills covered there will be a wide range of modern and traditional tools and techniques used from traditional tool shaping adzes and spokeshaves through to modern power tools like the Arbortech. So why not join us for a great experience? We provide all the tools, timber and refreshments whilst you are here; you just have to remember to take the chair home with you! No experience needed.



For information or to book a course please contact Vicky Turner on **0800 9751905** or visit **www.axminsterskillcentre.co.uk**